



# Longfield Solar Farm

Arboricultural Impact Assessment (Part 2 of 2)

Document Reference : EN010118/EX/8.13

Revision 1.0

October 2022

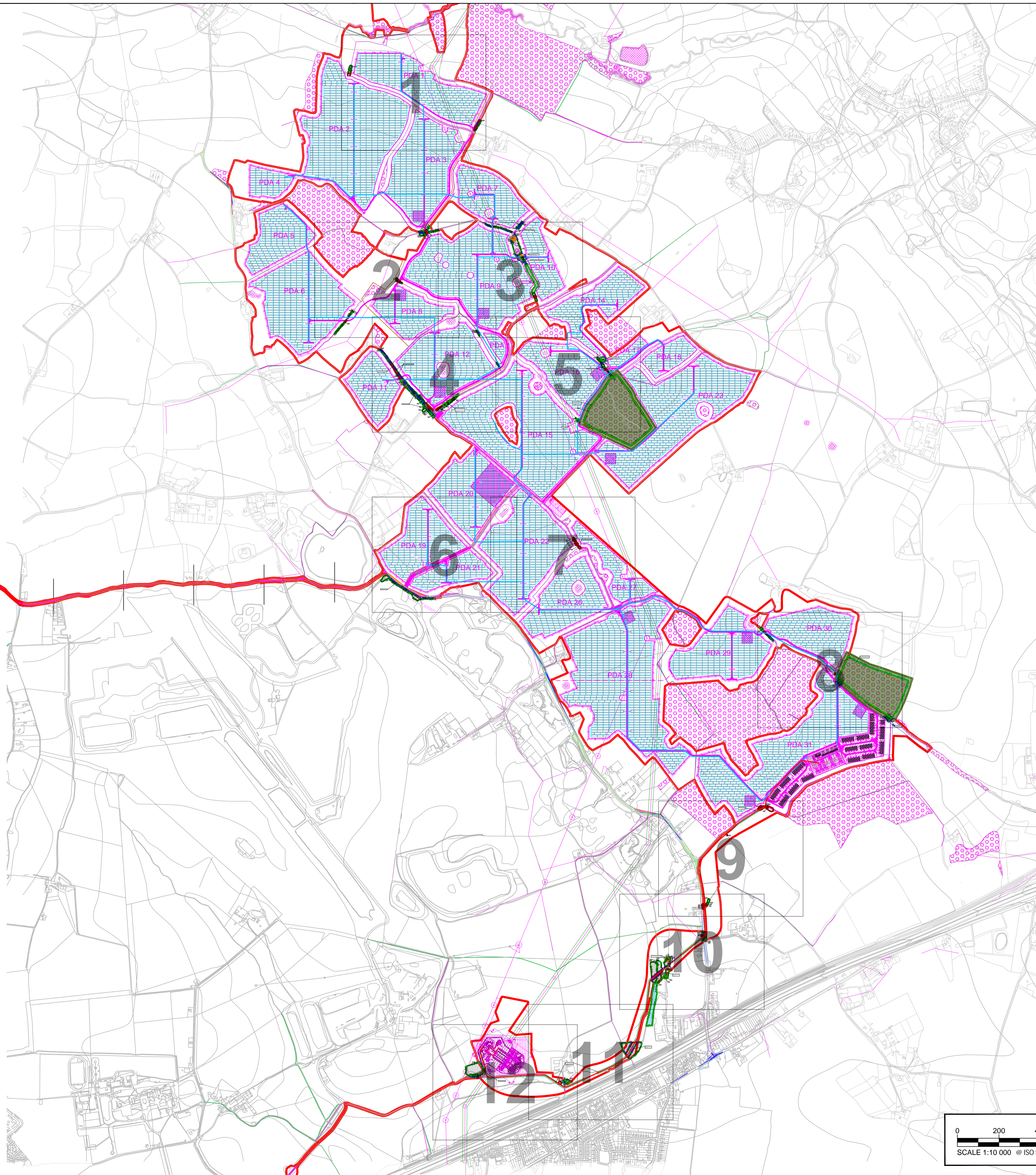
Longfield Solar Energy Farm Ltd

APFP Regulation 5(2)(q)

Planning Act 2008

Infrastructure Planning (Applications: Prescribed Forms and Procedure)

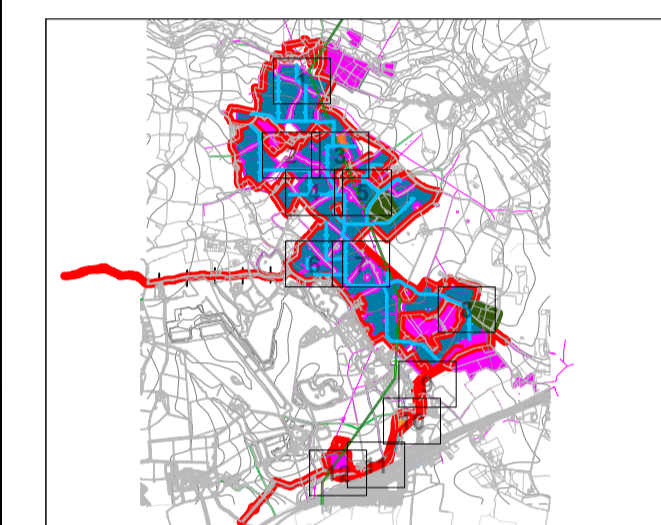
Regulations 2009



**GENERAL NOTES**

1. TREE CATEGORIES AS DEFINED BY BS 5837:2012
2. TREE LOCATIONS ARE BASED ON THE OS MAPPING, AERIAL IMAGERY, AND GPS CO-ORDINATES FROM ON SITE WALKOVER.
3. \* INDICATES A TREE / GROUP WHOSE POSITION IS APPROXIMATE AS BASED UPON AERIAL PHOTOGRAPHY AND ON SITE OBSERVATIONS.
4. PLANS SHOULD BE READ IN CONJUNCTION WITH THE AECOM ARBORICULTURAL REPORT.
5. THE ORIGINAL OF THIS DRAWING WAS PRODUCED IN COLOUR - A MONOCHROME COPY SHOULD NOT BE RELIED UPON.
6. DRAWING REFERENCES:  
 012021.dwg - Longfield Solar Farm RB.dwg  
 4077\_LGF\_DR\_PFE\_000108.dwg  
 X:\Longfield Solar Farm Mapping.dwg  
 Longfield Solar Farm - Detailed Drawings - 010202.dwg  
 OS\_SiteMap.dwg, OS002\_050015\_V05\_Map.dwg, OS\_Map.dwg  
 OS\_12121005\_RB.dwg

**KEY PLAN**



**KEY**

- SITE BOUNDARY
- EXISTING TREE, GROUP, WOODLAND, OR HEDGE TO BE RETAINED
- EXISTING TREE, GROUP, WOODLAND, OR HEDGE TO BE REMOVED
- ROOT PROTECTION AREA OF RETAINED TREES (AS DEFINED BY BS 5837:2012)
- TREE PROTECTION FENCING
- CONSTRUCTION EXCLUSION ZONE (STORAGE OF PLANT MATERIALS, STORAGE, EXCAVATION AND ALL OTHER CONSTRUCTION ACTIVITIES ARE EXCLUDED WITHIN THESE AREAS FOR THE DURATION OF PROTECTING TREE(S))
- CONSTRUCTION WORKING ZONE (MANAGED CONSTRUCTION PROCESSES PERMITTED IN ACCORDANCE WITH THE PRINCIPLES SET OUT WITHIN THE ARBORICULTURAL IMPACT ASSESSMENT)
- GROUND PROTECTION ZONE (MANAGED CONSTRUCTION PROCESSES PERMITTED IN ACCORDANCE WITH THE PRINCIPLES SET OUT WITHIN THE ARBORICULTURAL IMPACT ASSESSMENT)
- PROPOSED DEVELOPMENT LAYOUT (BASED UPON DRAWING REFERENCE(S) LISTED IN THE GENERAL NOTES SECTION)
- VETERAN TREE MARKER (INDICATES POSITION OF A VETERAN TREE)
- ANCIENT WOODLAND (WITH 15M BUFFER ZONE) (AREA CLASSIFIED AS AN ANCIENT WOODLAND)
- TREE PRESERVATION ORDER (AREA COVERED BY A TREE PRESERVATION ORDER (TPO))
- 400 kV CABLE ROUTE (IN 3M WORKING WIDTH)
- OTHER CABLE ROUTES (IN 3M WORKING WIDTH)

**ISSUE/REVISION**

NO	DATE	DESCRIPTION
P01	22.09.22	FIRST ISSUE
VR		

**DRAWING STATUS**

ISSUE

**PROJECT NUMBER**

60640215

**SHEET TITLE**

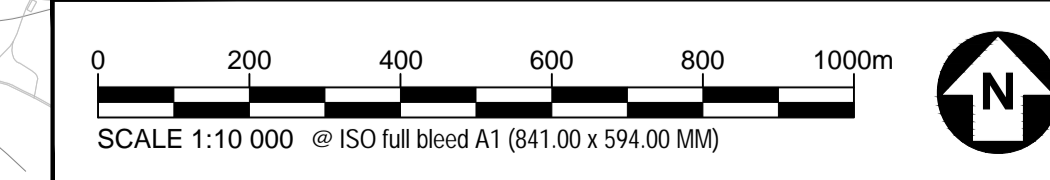
TREE PROTECTION PLAN  
 (SHEET 00)

**SHEET NUMBER**

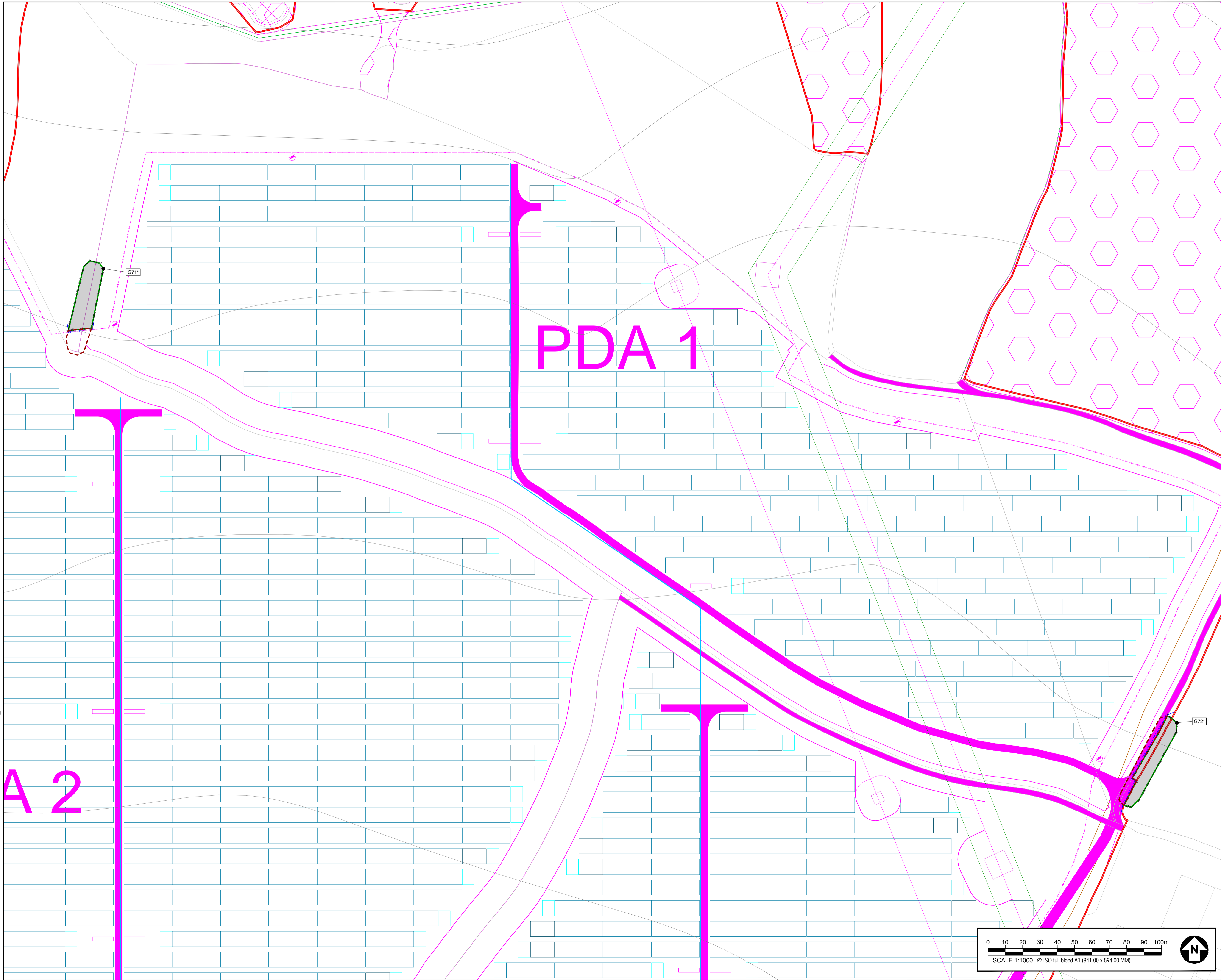
60640215-ACM-XX-XX-AB-TPP-000

**REV.**

P01



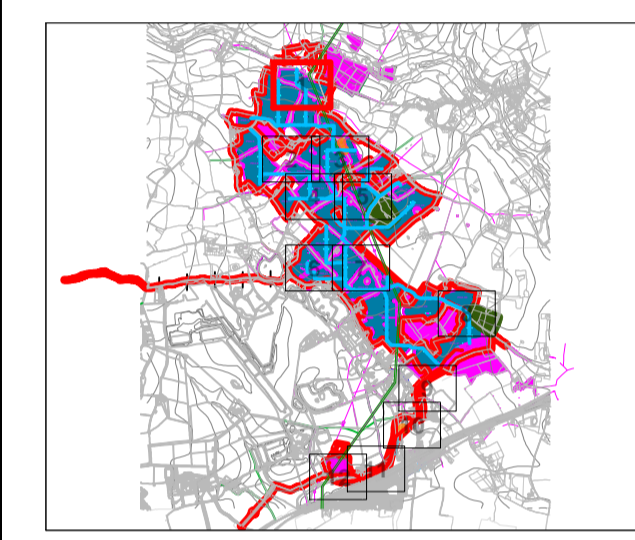
This drawing has been prepared for the use of AECOM's client. It may not be used, modified, reproduced or relied upon by third parties, except as agreed by AECOM or as required by law. AECOM accepts no responsibility and denies any liability whatsoever to any party that uses or relies on this drawing without AECOM's express written consent. Do not scale this document. All measurements must be obtained from the stated dimensions.



**GENERAL NOTES**

1. TREE CATEGORIES AS DEFINED BY BS 5837:2012
2. TREE LOCATIONS ARE BASED ON THE OS MAPPING, AERIAL IMAGERY, AND GPS CO-ORDINATES FROM ON SITE WALKOVER.
3. \* INDICATES A TREE / GROUP WHOSE POSITION IS APPROXIMATE AS BASED UPON AERIAL PHOTOGRAPHY AND ON SITE OBSERVATIONS.
4. PLANS SHOULD BE READ IN CONJUNCTION WITH THE AECOM ARBORICULTURAL REPORT.
5. THE ORIGINAL OF THIS DRAWING WAS PRODUCED IN COLOUR - A MONOCHROME COPY SHOULD NOT BE RELIED UPON.
6. DRAWING REFERENCES:  
010201.dwg - Longfield Solar Farm RB.B.dwg  
407\_LGF\_DR\_PFE\_000108.dwg  
X:\Longfield Solar Farm Mapping.dwg  
Longfield Solar Farm - Detailed Drawings - 010202.dwg  
105\_SiteMap.dwg, 105002\_050115\_05\_Mapping\_061200.dwg  
01\_1012006\_RLB.dwg

**KEY PLAN**



**KEY**

- SITE BOUNDARY
- EXISTING TREE, GROUP, WOODLAND, OR HEDGE TO BE RETAINED
- EXISTING TREE, GROUP, WOODLAND, OR HEDGE TO BE REMOVED
- ROOT PROTECTION AREA OF RETAINED TREES (AS DEFINED BY BS 5837:2012)
- TREE PROTECTION FENCING
- CONSTRUCTION EXCLUSION ZONE (EXCLUSION OF PLANT MATERIALS STORAGE, EXCAVATION AND ALL OTHER CONSTRUCTION ACTIVITIES ARE EXCLUDED WITHIN THESE AREAS FOR THE BOUNDARIES OF PROTECTIVE TREE FENCE LINE)
- CONSTRUCTION WORKING ZONE (MANAGED CONSTRUCTION PROCESSES PERMITTED IN ACCORDANCE WITH THE PRINCIPLES SET OUT WITHIN THE ARBORICULTURAL IMPACT ASSESSMENT)
- GROUND PROTECTION ZONE (MANAGED CONSTRUCTION PROCESSES PERMITTED IN ACCORDANCE WITH THE PRINCIPLES SET OUT WITHIN THE ARBORICULTURAL IMPACT ASSESSMENT)
- PROPOSED DEVELOPMENT LAYOUT (BASED UPON DRAWING REFERENCES LISTED IN THE GENERAL NOTES SECTION)
- VETERAN TREE MARKER (INDICATES POSITION OF A VETERAN TREE)
- ANCIENT WOODLAND (WITH 15M BUFFER ZONE) (AREA CLASSIFIED AS AN ANCIENT WOODLAND)
- TREE PRESERVATION ORDER (AREA COVERED BY A TREE PRESERVATION ORDER (TPO))
- 400 kV CABLE ROUTE (IN 5M WORKING WIDTH)
- OTHER CABLE ROUTES (IN 5M WORKING WIDTH)

**ISSUE/REVISION**

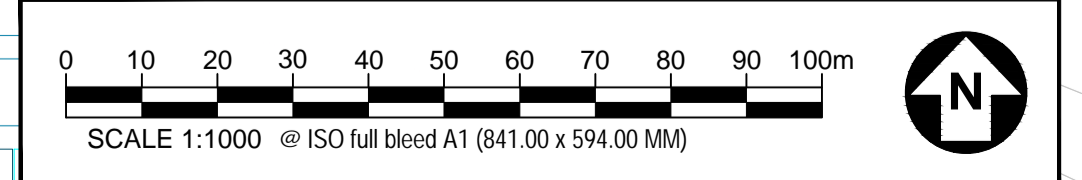
NO	DATE	DESCRIPTION
P01	22.09.22	FIRST ISSUE
VR		

**DRAWING STATUS**  
ISSUE

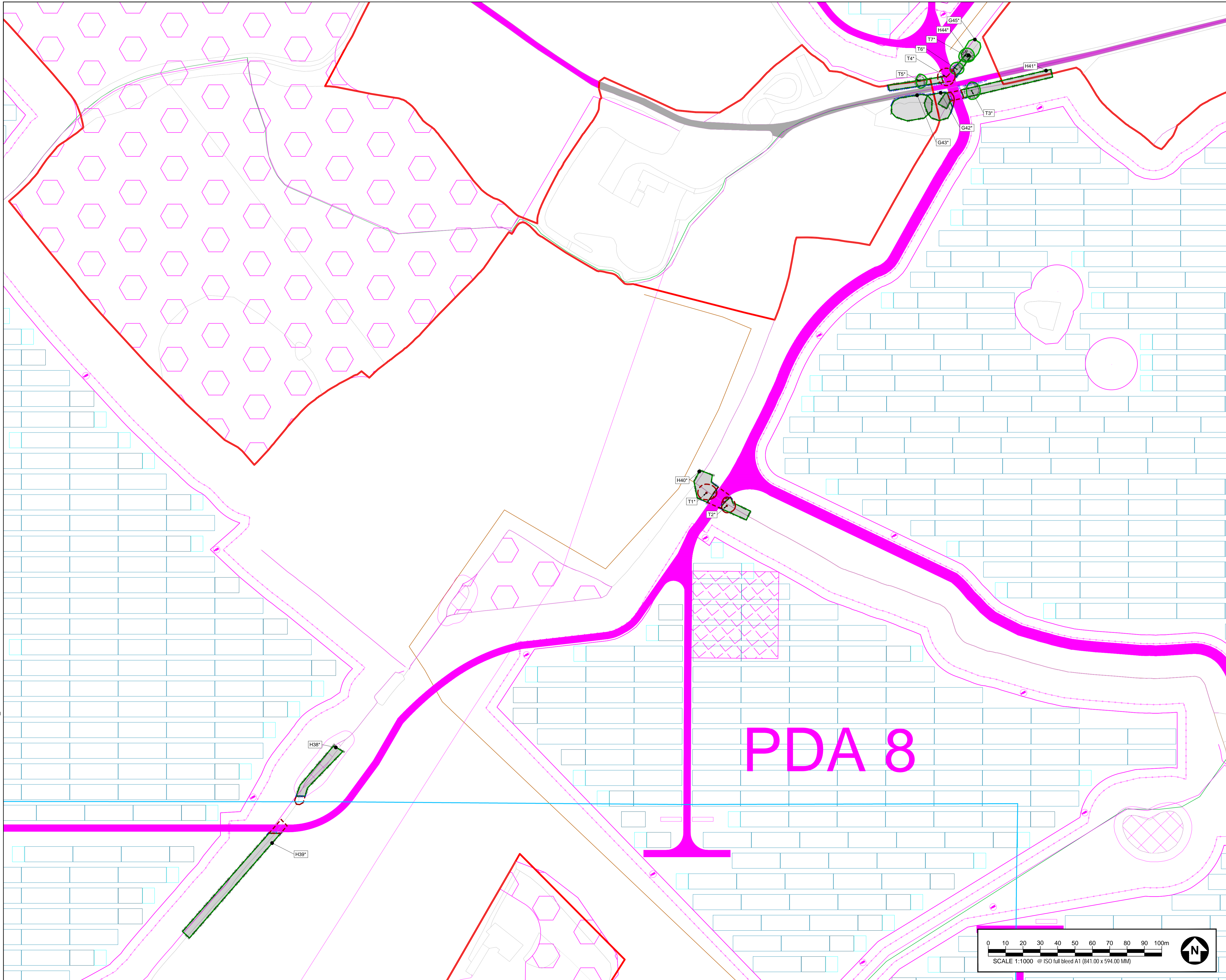
**PROJECT NUMBER**  
60640215

**SHEET TITLE**  
TREE PROTECTION PLAN  
(SHEET 1)

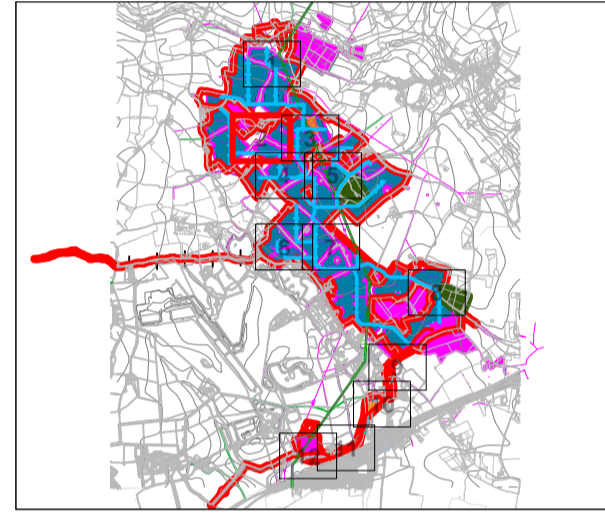
**SHEET NUMBER** 60640215-ACM-XX-XX-AB-TPP-01 **REV.** P01



This drawing has been prepared for the use of AECOM's client. It may not be used, modified, reproduced or relied upon by third parties, except as agreed by AECOM or as required by law. AECOM accepts no responsibility, and denies any liability whatsoever, to any party that uses or relies on this drawing without AECOM's express written consent. Do not scale this document. All measurements must be obtained from the stated dimensions.



**KEY PLAN**



**KEY**

- SITE BOUNDARY
- EXISTING TREE, GROUP, WOODLAND, OR HEDGE TO BE RETAINED
- EXISTING TREE, GROUP, WOODLAND, OR HEDGE TO BE REMOVED
- ROOT PROTECTION AREA OF RETAINED TREES (AS DEFINED BY BS 5837:2012)
- TREE PROTECTION FENCING
- CONSTRUCTION EXCLUSION ZONE (STRUCTURES OF PLANS, MATERIALS STORAGE, EXCAVATION AND ALL OTHER CONSTRUCTION ACTIVITIES ARE EXCLUDED WITHIN THESE AREAS FOR THE PURPOSES OF PROTECTING TREE HEALTH)
- CONSTRUCTION WORKING ZONE (MANAGED CONSTRUCTION PROCESSES PERMITTED IN ACCORDANCE WITH THE PRINCIPLES SET OUT WITHIN THE ARBORCULTURAL IMPACT ASSESSMENT)
- GROUND PROTECTION ZONE (MANAGED CONSTRUCTION PROCESSES PERMITTED IN ACCORDANCE WITH THE PRINCIPLES SET OUT WITHIN THE ARBORCULTURAL IMPACT ASSESSMENT)
- PROPOSED DEVELOPMENT LAYOUT (BASED UPON DRAWING REFERENCES LISTED IN THE GENERAL NOTES SECTION)
- VETERAN TREE MARKER (INDICATES POSITION OF A VETERAN TREE)
- ANCIENT WOODLAND (WITH 15M BUFFER ZONE) (AREA CLASSIFIED AS AN ANCIENT WOODLAND)
- TREE PRESERVATION ORDER (AREA COVERED BY A TREE PRESERVATION ORDER (TPO))
- 400 kV CABLE ROUTE (IN 6M WORKING WIDTH)
- OTHER CABLE ROUTES (IN 6M WORKING WIDTH)

**ISSUE/REVISION**

NO	DATE	DESCRIPTION
P01	22.09.22	FIRST ISSUE
VR		DATE DESCRIPTION

**DRAWING STATUS**

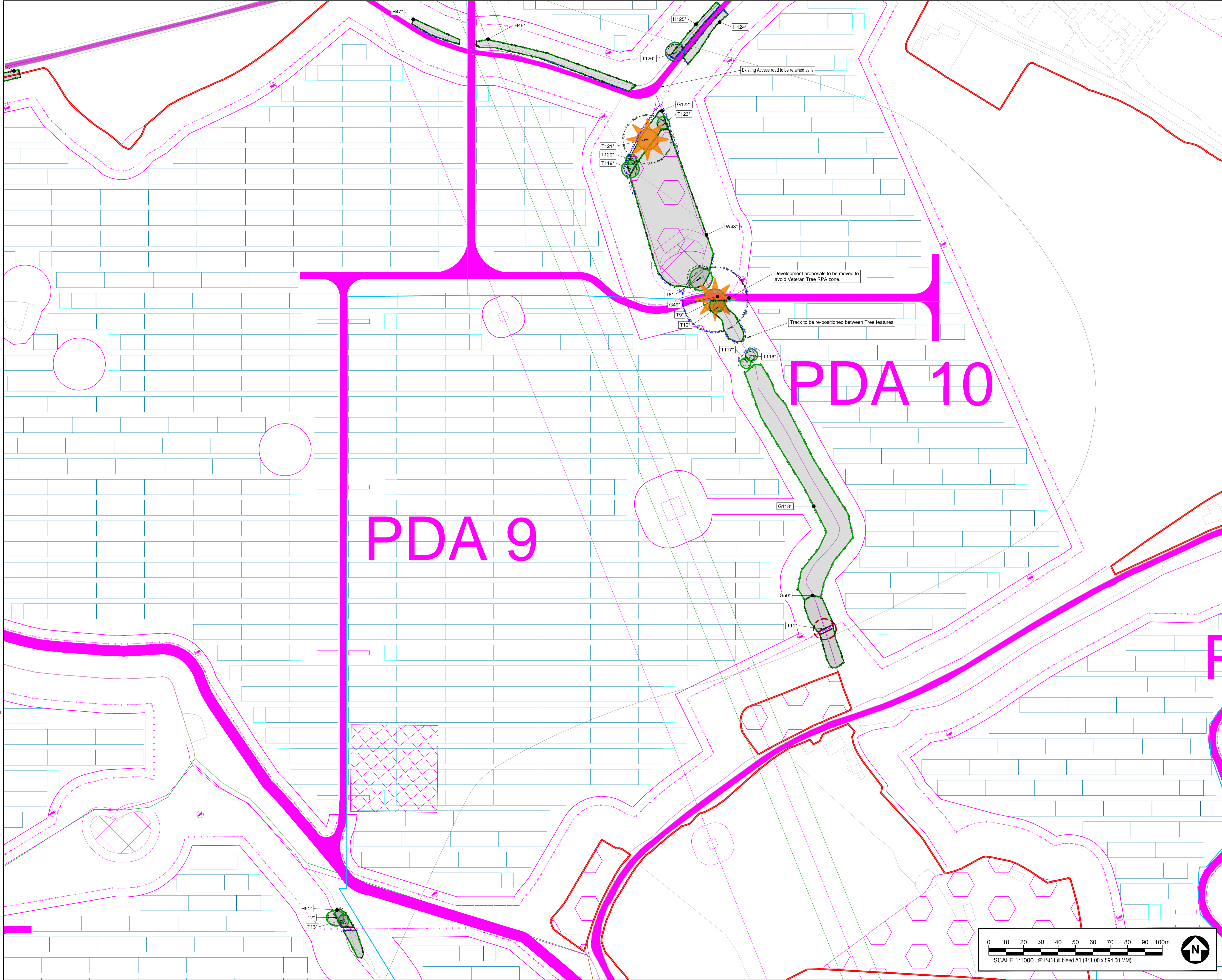
ISSUE

**PROJECT NUMBER**  
60640215

**SHEET TITLE**  
TREE PROTECTION PLAN  
(SHEET 2)

**SHEET NUMBER**      **REV.**  
60640215-ACM-XX-XX-AB-TPP-02      P01

This drawing has been prepared for the use of AECOM's Client. It may not be used, modified, reproduced or relied upon by third parties, except as agreed by AECOM or as required by law. AECOM accepts no responsibility and denies any liability whatsoever to any party that uses or relies on this drawing without AECOM's express written consent. Do not scale this document. All measurements must be obtained from the stated dimensions.



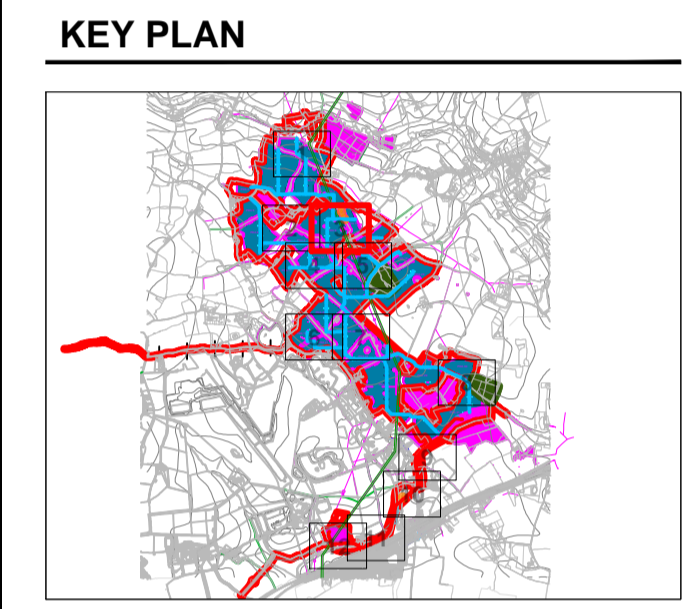
**AECOM**

**PROJECT**  
LONGFIELD SOLAR

**CLIENT**  
LONGFIELD SOLAR ENERGY FARM LTD  
CONSULTANT

**AECOM**  
Plumer House, Third Floor,  
East Wing, Tallyour Road  
Plymouth, PL6 5DH  
Tel +44(0)1752 676700  
Fax +44(0)870 238 6023  
www.aecom.com

- GENERAL NOTES**
1. TREE CATEGORIES AS DEFINED BY BS 5837:2012
  2. TREE LOCATIONS ARE BASED ON THE OS MAPPING, AERIAL IMAGERY, AND GPS CO-ORDINATES FROM ON SITE WALKOVER.
  3. \* INDICATES A TREE / GROUP WHOSE POSITION IS APPROXIMATE AS BASED UPON AERIAL PHOTOGRAPHY AND ON SITE OBSERVATIONS.
  4. PLANS SHOULD BE READ IN CONJUNCTION WITH THE AECOM ARBORCULTURAL REPORT.
  5. THE ORIGINAL OF THIS DRAWING WAS PRODUCED IN COLOUR - A MONOCHROME COPY SHOULD NOT BE RELIED UPON.
- DRAWING REFERENCES:**
- 2022-01-05 - Longfield Solar Farm RB.dwg
  - 4071\_LCF\_EPR\_PFE\_000108.dwg
  - 2 - Longfield Solar Farm Mapping.dwg
  - Longfield Solar Farm - Detailed Drawings - 010202.dwg
  - 05 - SiteMap.dwg, 050001\_050015\_05\_Map.dwg, 061220.dwg
  - 05 - 1212006-050001-050015



- KEY**
- SITE BOUNDARY
  - EXISTING TREE, GROUP, WOODLAND, OR HEDGE TO BE RETAINED
  - EXISTING TREE, GROUP, WOODLAND, OR HEDGE TO BE REMOVED
  - ROOT PROTECTION AREA OF RETAINED TREES (AS DEFINED BY BS 5837:2012)
  - TREE PROTECTION FENCING
  - CONSTRUCTION EXCLUSION ZONE (STORAGE OF PLANT MATERIALS, STORAGE, EXCAVATION AND ALL OTHER CONSTRUCTION ACTIVITIES ARE EXCLUDED WITHIN THESE AREAS FOR THE PURPOSES OF PROTECTING TREE HEALTH)
  - CONSTRUCTION WORKING ZONE (MANAGED CONSTRUCTION PROCESSES PERMITTED IN ACCORDANCE WITH THE PRINCIPLES SET OUT WITHIN THE ARBORCULTURAL IMPACT ASSESSMENT)
  - GROUND PROTECTION ZONE (MANAGED CONSTRUCTION PROCESSES PERMITTED IN ACCORDANCE WITH THE PRINCIPLES SET OUT WITHIN THE ARBORCULTURAL IMPACT ASSESSMENT)
  - PROPOSED DEVELOPMENT LAYOUT (BASED UPON DRAWING REFERENCES LISTED IN THE GENERAL NOTES SECTION)
  - ★ VETERAN TREE MARKER (INDICATES POSITION OF A VETERAN TREE)
  - ANCIENT WOODLAND (WITH 15M BUFFER ZONE) (AREA CLASSIFIED AS AN ANCIENT WOODLAND)
  - TREE PRESERVATION ORDER (AREA COVERED BY A TREE PRESERVATION ORDER (TPO))
  - 400 kV CABLE ROUTE (IN 3M WORKING WIDTH)
  - OTHER CABLE ROUTES (IN 3M WORKING WIDTH)

**ISSUE/REVISION**

NO	DATE	DESCRIPTION
P01	22/09/22	FIRST ISSUE
VR		DATE DESCRIPTION

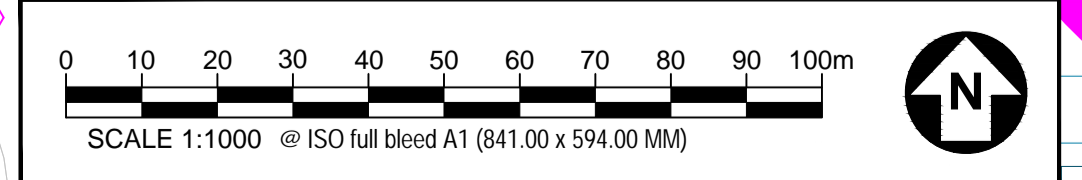
**DRAWING STATUS**  
ISSUE

**PROJECT NUMBER**  
60640215

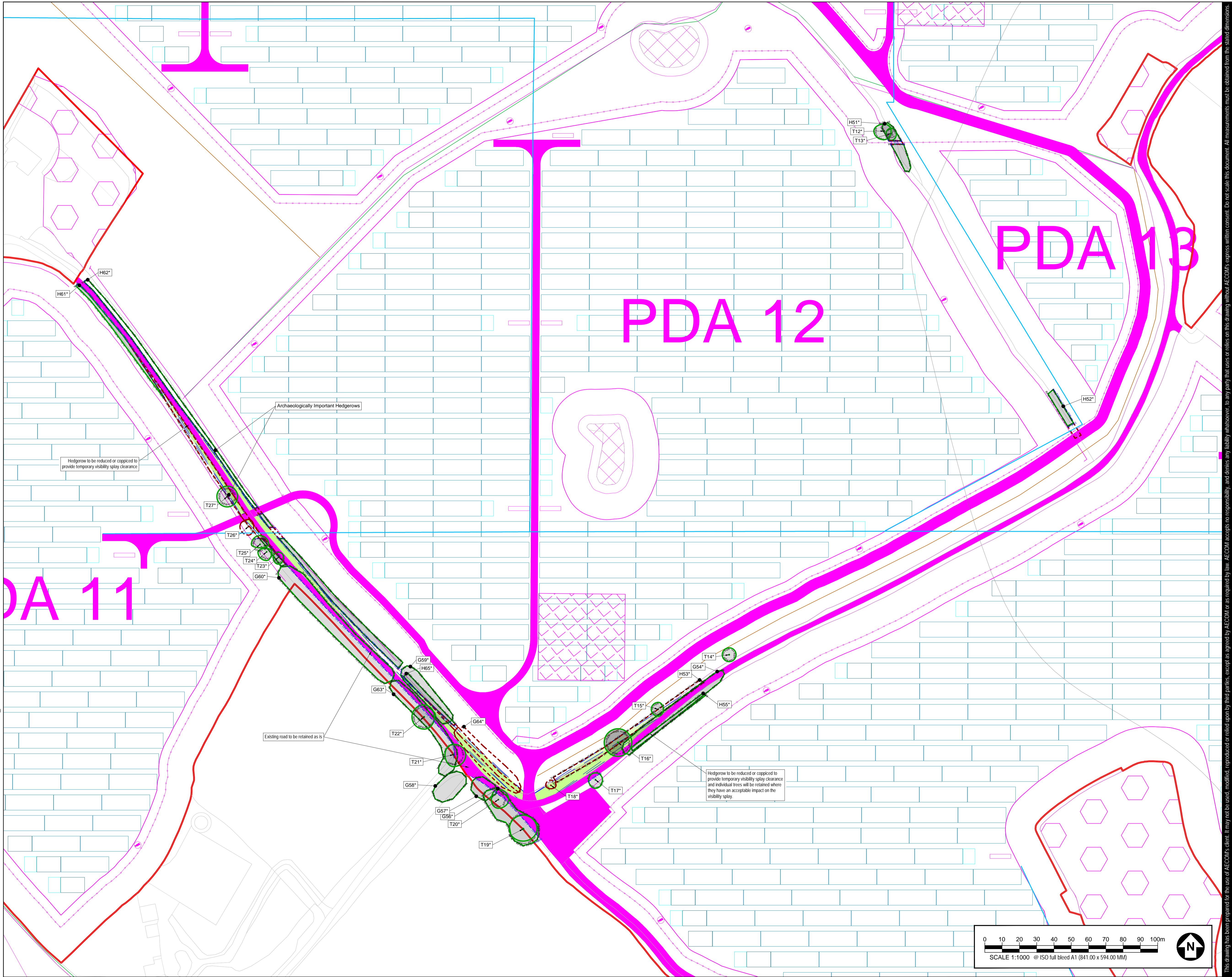
**SHEET TITLE**  
TREE PROTECTION PLAN (SHEET 3)

**SHEET NUMBER**      **REV.**

60640215-ACM-XX-XX-AB-TPP-03      P01



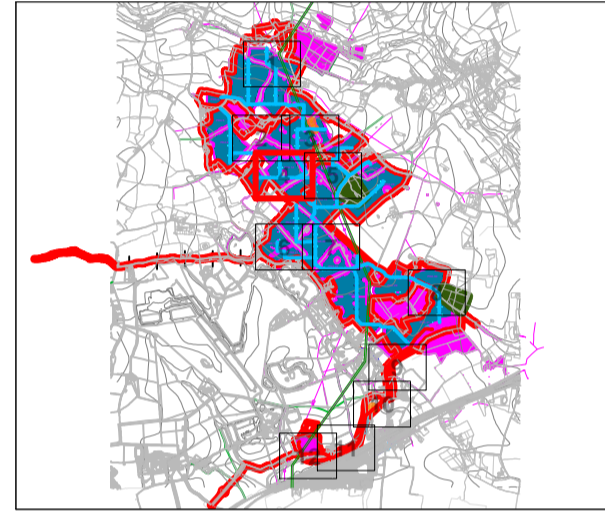
This drawing has been prepared for the use of AECOM's Client. It may not be used, modified, reproduced or relied upon by third parties, except as agreed by AECOM or as required by law. AECOM accepts no responsibility and denies any liability whatsoever, to any party that uses or relies on this drawing without AECOM's express written consent. Do not scale this document. All measurements must be obtained from the stated dimensions.



**GENERAL NOTES**

1. TREE CATEGORIES AS DEFINED BY BS 5837:2012
2. TREE LOCATIONS ARE BASED ON THE OS MAPPING, AERIAL IMAGERY, AND GPS CO-ORDINATES FROM ON SITE WALKOVER.
3. \* INDICATES A TREE / GROUP WHOSE POSITION IS APPROXIMATE AS BASED UPON AERIAL PHOTOGRAPHY AND ON SITE OBSERVATIONS.
4. PLANS SHOULD BE READ IN CONJUNCTION WITH THE AECOM ARBOCULTURAL REPORT.
5. THE ORIGINAL OF THIS DRAWING WAS PRODUCED IN COLOUR - A MONOCHROME COPY SHOULD NOT BE RELIED UPON.
6. DRAWING REFERENCES:  
 2022-01-05 - Longfield Solar Farm RB.dwg  
 4077\_LGF\_EPR\_200108.dwg  
 T2\_Longfield Solar Farm Mapping.dwg  
 Longfield Solar Farm - Detailed Drawings - 010202.dwg  
 OS\_SiteMapping\_202203\_250121\_05\_Mapping\_081220.dwg  
 OS\_12574006\_2018\_PDA.dwg

**KEY PLAN**



**KEY**

- SITE BOUNDARY
- EXISTING TREE, GROUP, WOODLAND, OR HEDGE TO BE RETAINED
- EXISTING TREE, GROUP, WOODLAND, OR HEDGE TO BE REMOVED
- ROOT PROTECTION AREA OF RETAINED TREES (AS DEFINED BY BS 5837:2012)
- TREE PROTECTION FENCING
- CONSTRUCTION EXCLUSION ZONE (STRUCTURING OF PLANS, MATERIALS STORAGE, EXCAVATION AND ALL OTHER CONSTRUCTION ACTIVITIES ARE EXCLUDED WITHIN THESE AREAS FOR THE DURATION OF PROTECTIVE TREE WORK)
- CONSTRUCTION WORKING ZONE (MANAGED CONSTRUCTION PROCESSES PERMITTED IN ACCORDANCE WITH THE PRINCIPLES SET OUT WITHIN THE ARBOCULTURAL IMPACT ASSESSMENT)
- GROUND PROTECTION ZONE (MANAGED CONSTRUCTION PROCESSES PERMITTED IN ACCORDANCE WITH THE PRINCIPLES SET OUT WITHIN THE ARBOCULTURAL IMPACT ASSESSMENT)
- PROPOSED DEVELOPMENT LAYOUT (BASED UPON DRAWINGS AND FORCES LISTED IN THE GENERAL NOTES SECTION)
- VETERAN TREE MARKER (INDICATES POSITION OF A VETERAN TREE)
- ANCIENT WOODLAND (WITH 15M BUFFER ZONE) (AREA CLASSIFIED AS AN ANCIENT WOODLAND)
- TREE PRESERVATION ORDER (AREA COVERED BY A TREE PRESERVATION ORDER (TPO))
- 400 kV CABLE ROUTE (IN 5M WORKING WIDTH)
- OTHER CABLE ROUTES (IN 5M WORKING WIDTH)

**ISSUE/REVISION**

NO	DATE	DESCRIPTION
P01	22.09.22	FIRST ISSUE
1/R		

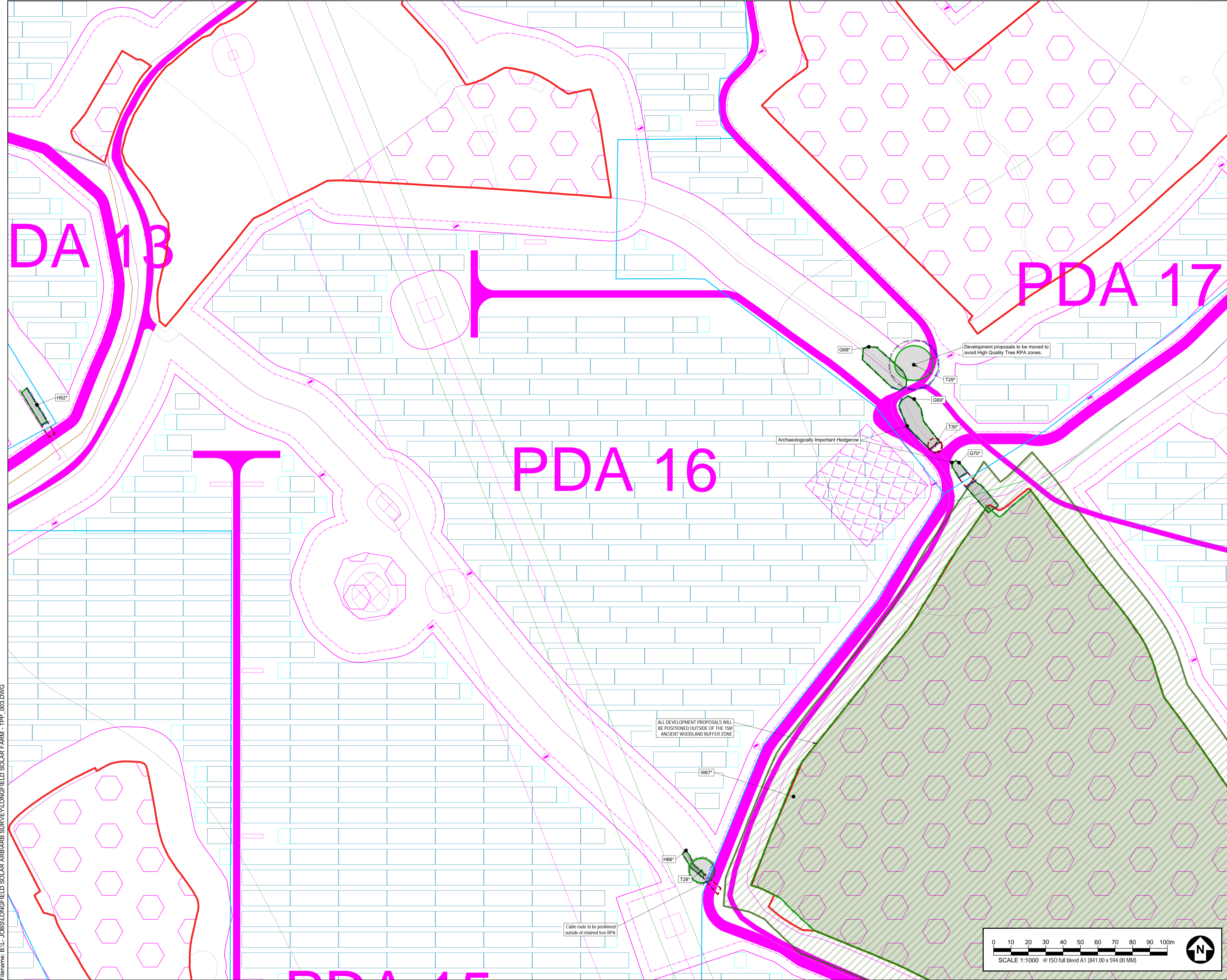
**DRAWING STATUS**  
 ISSUE

**PROJECT NUMBER**  
 60640215

**SHEET TITLE**  
 TREE PROTECTION PLAN  
 (SHEET 4)

**SHEET NUMBER**      **REV.**  
 60640215-ACM-XX-XX-AB-TPP-04      P01

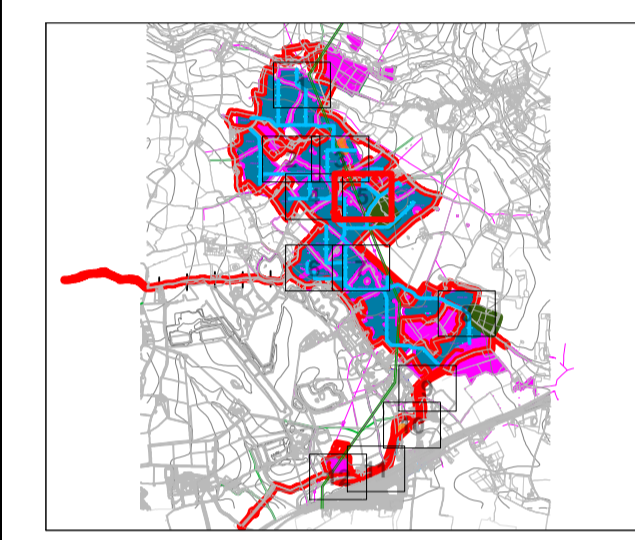
This drawing has been prepared for the use of AECOM's client. It may not be used, modified, reproduced or relied upon by third parties, except as agreed by AECOM or as required by law. AECOM accepts no responsibility, and denies any liability whatsoever, to any party that uses or relies on this drawing without AECOM's express written consent. Do not scale this document. All measurements must be obtained from the scaled dimensions.



**GENERAL NOTES**

1. TREE CATEGORIES AS DEFINED BY BS 5837:2012
2. TREE LOCATIONS ARE BASED ON THE OS MAPPING, AERIAL IMAGERY, AND GPS CO-ORDINATES FROM ON SITE WALKOVER.
3. \* INDICATES A TREE / GROUP WHOSE POSITION IS APPROXIMATE AS BASED UPON AERIAL PHOTOGRAPHY AND ON SITE OBSERVATIONS.
4. PLANS SHOULD BE READ IN CONJUNCTION WITH THE AECOM ARBORICULTURAL REPORT.
5. THE ORIGINAL OF THIS DRAWING WAS PRODUCED IN COLOUR - A MONOCHROME COPY SHOULD NOT BE RELIED UPON.
6. DRAWING REFERENCES:  
20220115\_Longfield Solar Farm RB.dwg  
4077\_LGF\_DR\_PFE\_20018.dwg  
N\_Longfield Solar Farm Mapping.dwg  
Longfield Solar Farm - Detailed Drawings - 010222.dwg  
DS\_SiteMap.dwg  
OS\_Mapping\_20220115\_V5\_Mapping\_081220.dwg  
0112120220115 RB.dwg

**KEY PLAN**



**KEY**

- SITE BOUNDARY
- EXISTING TREE, GROUP, WOODLAND, OR HEDGE TO BE RETAINED
- EXISTING TREE, GROUP, WOODLAND, OR HEDGE TO BE REMOVED
- ROOT PROTECTION AREA OF RETAINED TREES (AS DEFINED BY BS 5837:2012)
- TREE PROTECTION FENCING
- CONSTRUCTION EXCLUSION ZONE (PROTECTION OF PLANS, MATERIALS, STORAGE, EXCAVATION AND ALL OTHER CONSTRUCTION ACTIVITIES ARE EXCLUDED WITHIN THESE AREAS FOR THE DURATION OF PROTECTIVE TREE-RISK PERIOD)
- CONSTRUCTION WORKING ZONE (MANAGED CONSTRUCTION PROCESSES PERMITTED IN ACCORDANCE WITH THE PRINCIPLES SET OUT WITHIN THE ARBORICULTURAL IMPACT ASSESSMENT)
- GROUND PROTECTION ZONE (MANAGED CONSTRUCTION PROCESSES PERMITTED IN ACCORDANCE WITH THE PRINCIPLES SET OUT WITHIN THE ARBORICULTURAL IMPACT ASSESSMENT)
- PROPOSED DEVELOPMENT LAYOUT (BASED UPON DRAWING REFERENCES LISTED IN THE GENERAL NOTES SECTION)
- ★ VETERAN TREE MARKER (INDICATES POSITION OF A VETERAN TREE)
- ANCIENT WOODLAND (WITH 15M BUFFER ZONE) (AREA CLASSIFIED AS AN ANCIENT WOODLAND)
- TREE PRESERVATION ORDER (AREA COVERED BY A TREE PRESERVATION ORDER (TPO))
- 400 kV CABLE ROUTE (IN 5M WORKING WIDTH)
- OTHER CABLE ROUTES (IN 5M WORKING WIDTH)

**ISSUE/REVISION**

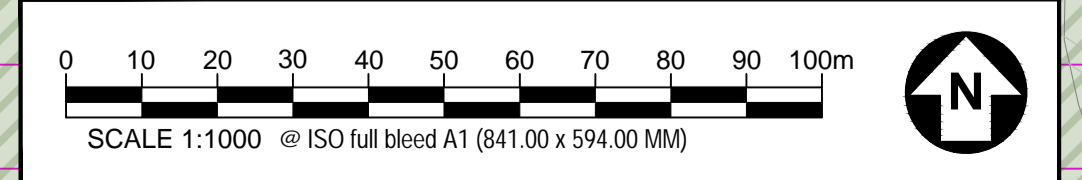
NO	DATE	DESCRIPTION
P01	22/09/22	FIRST ISSUE
VR		

**DRAWING STATUS**  
ISSUE

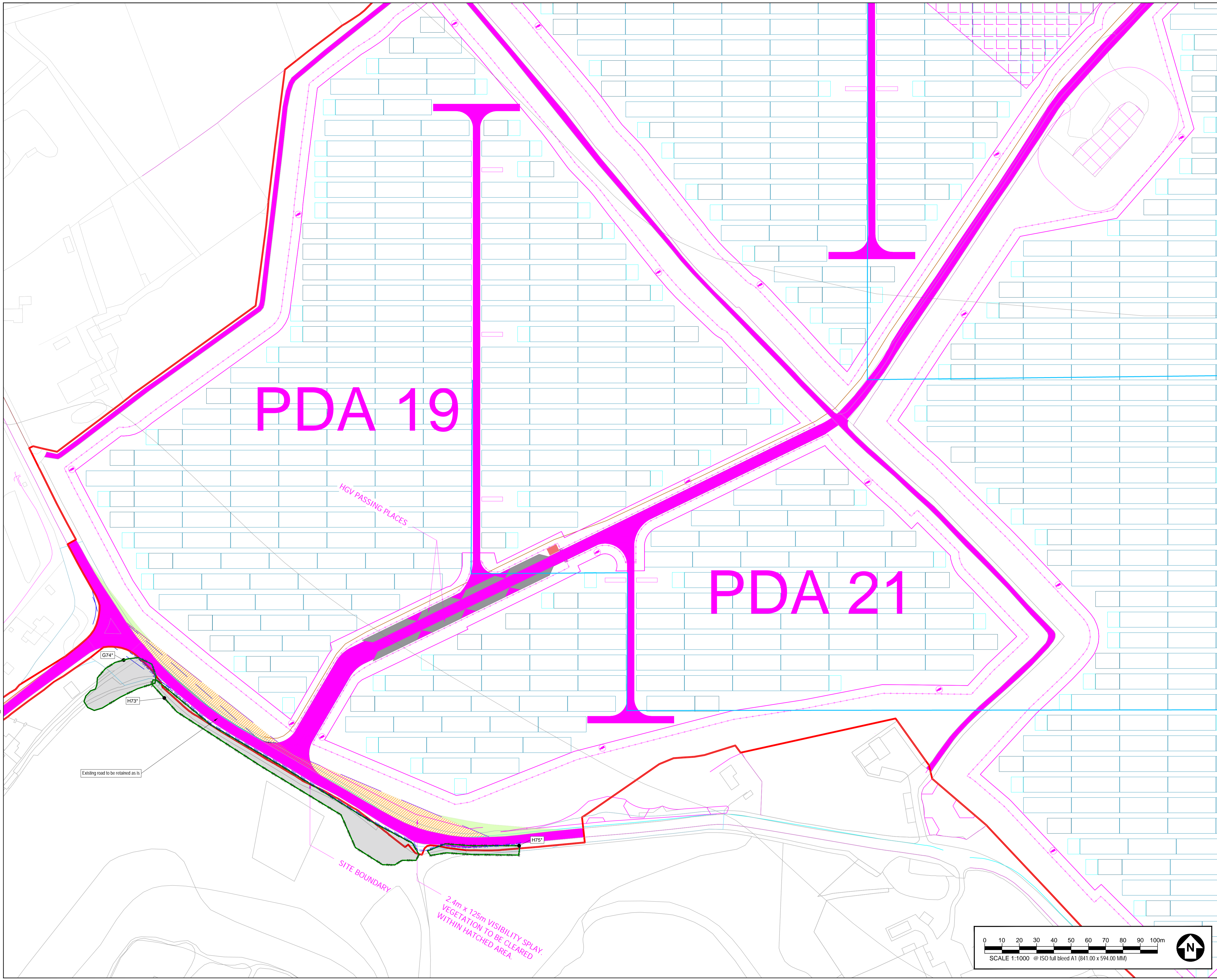
**PROJECT NUMBER**  
60640215

**SHEET TITLE**  
TREE PROTECTION PLAN  
(SHEET 5)

**SHEET NUMBER**      **REV.**  
60640215-ACM-XX-XX-AB-TPP-05      P01



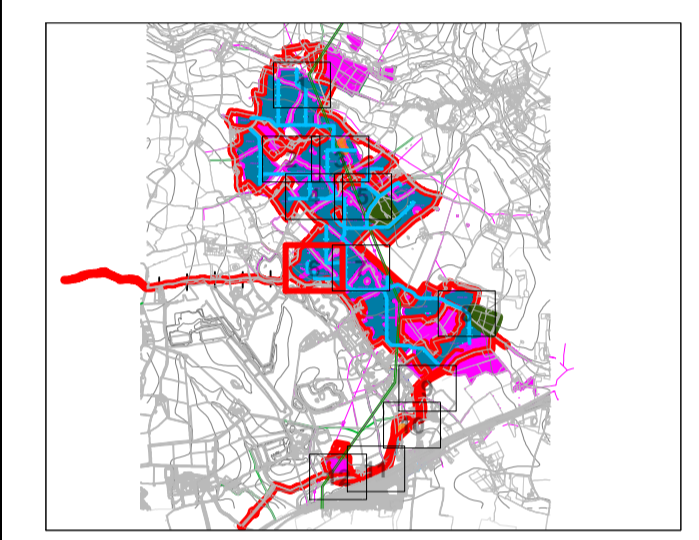
This drawing has been prepared for the use of AECOM's Client. It may not be used, modified, reproduced or relied upon by third parties, except as agreed by AECOM or as required by law. AECOM accepts no responsibility, and denies any liability whatsoever, to any party that uses or relies on this drawing without AECOM's express written consent. Do not scale this document. All measurements must be obtained from the scaled dimensions.



**GENERAL NOTES**

1. TREE CATEGORIES AS DEFINED BY BS 5837:2012
2. TREE LOCATIONS ARE BASED ON THE OS MAPPING, AERIAL IMAGERY, AND GPS CO-ORDINATES FROM ON SITE WALKOVER.
3. \* INDICATES A TREE / GROUP WHOSE POSITION IS APPROXIMATE AS BASED UPON AERIAL PHOTOGRAPHY AND ON SITE OBSERVATIONS.
4. PLANS SHOULD BE READ IN CONJUNCTION WITH THE AECOM ARBORICULTURAL REPORT.
5. THE ORIGINAL OF THIS DRAWING WAS PRODUCED IN COLOUR - A MONOCHROME COPY SHOULD NOT BE RELIED UPON.
6. DRAWING REFERENCES:  
01020210 - Longfield Solar Farm RB.dwg  
4071\_LGF\_DR\_PFE\_00010.dwg  
\* Longfield Solar Farm Mapping.dwg  
Longfield Solar Farm - Detailed Drawings - 010202.dwg  
015\_01000.dwg\_010000\_010015\_015\_Map.dwg\_010202.dwg  
015\_010000\_010015\_015\_Map.dwg

**KEY PLAN**



**KEY**

- SITE BOUNDARY
- EXISTING TREE, GROUP, WOODLAND, OR HEDGE TO BE RETAINED
- EXISTING TREE, GROUP, WOODLAND, OR HEDGE TO BE REMOVED
- ROOT PROTECTION AREA OF RETAINED TREES (AS DEFINED BY BS 5837:2012)
- TREE PROTECTION FENCING
- CONSTRUCTION EXCLUSION ZONE (PROCESSES OF PLANT MATERIALS STORAGE, EXCAVATION AND ALL OTHER CONSTRUCTION ACTIVITIES ARE EXCLUDED WITHIN THESE AREAS FOR THE PURPOSES OF PROTECTING TREE HEALTH)
- CONSTRUCTION WORKING ZONE (MANAGED CONSTRUCTION PROCESSES PERMITTED IN ACCORDANCE WITH THE PRINCIPLES SET OUT WITHIN THE ARBORICULTURAL IMPACT ASSESSMENT)
- GROUND PROTECTION ZONE (MANAGED CONSTRUCTION PROCESSES PERMITTED IN ACCORDANCE WITH THE PRINCIPLES SET OUT WITHIN THE ARBORICULTURAL IMPACT ASSESSMENT)
- PROPOSED DEVELOPMENT LAYOUT (BASED UPON DRAWING REFERENCES LISTED IN THE GENERAL NOTES SECTION)
- VETERAN TREE MARKER (INDICATES POSITION OF A VETERAN TREE)
- ANCIENT WOODLAND (WITH 15M BUFFER ZONE) (AREA CLASSIFIED AS AN ANCIENT WOODLAND)
- TREE PRESERVATION ORDER (AREA COVERED BY A TREE PRESERVATION ORDER (TPO))
- 400 kV CABLE ROUTE (IN 5M WORKING WIDTH)
- OTHER CABLE ROUTES (IN 5M WORKING WIDTH)

**ISSUE/REVISION**

NO	DATE	DESCRIPTION
P01	22.09.22	FIRST ISSUE
VR		

**DRAWING STATUS**

ISSUE

**PROJECT NUMBER**

60640215

**SHEET TITLE**

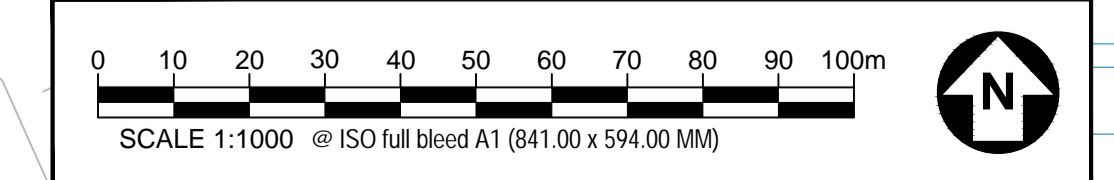
TREE PROTECTION PLAN (SHEET 6)

**SHEET NUMBER**

60640215-ACM-XX-XX-AB-TPP-06

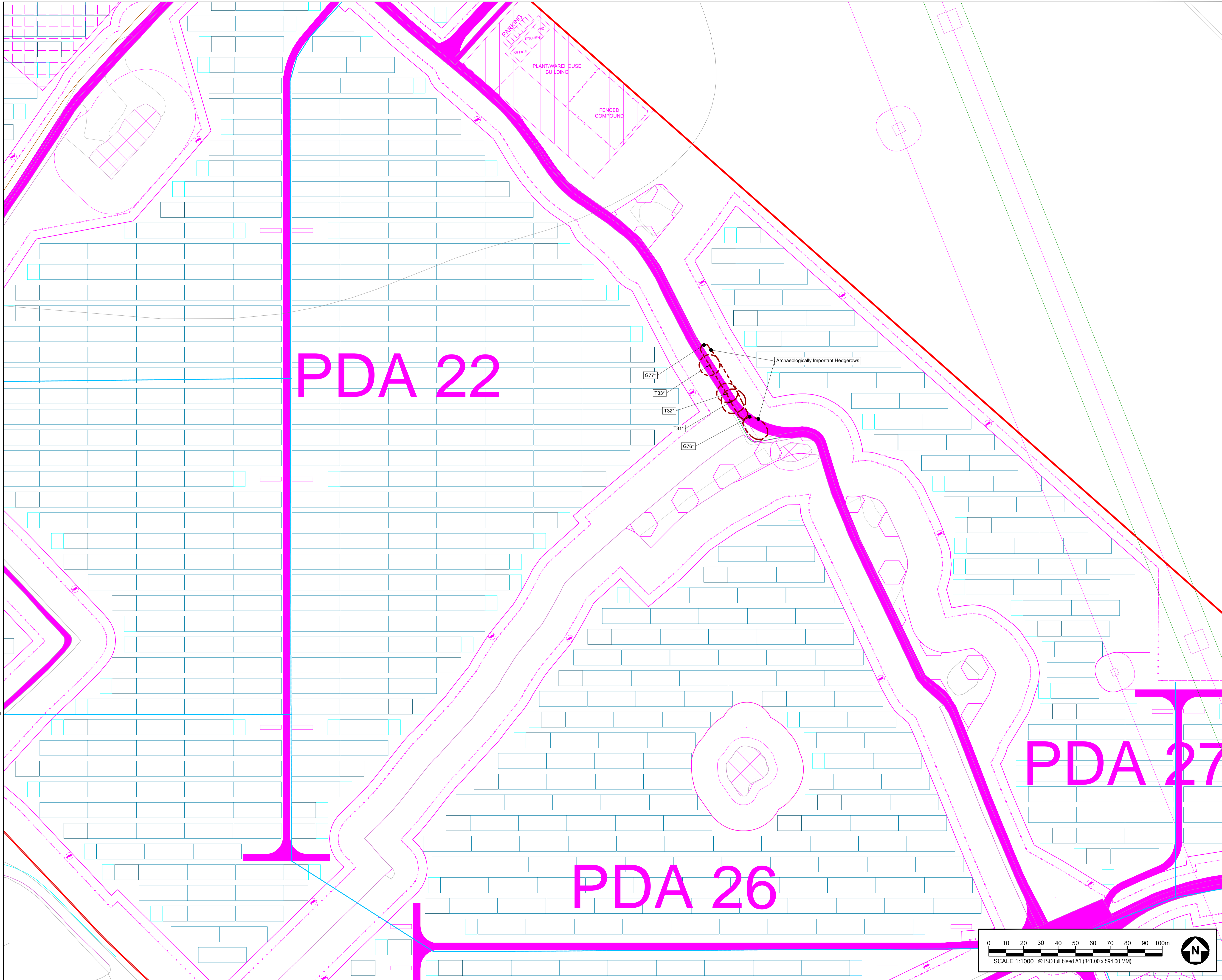
**REV.**

P01



This drawing has been prepared for the use of AECOM's client. It may not be used, modified, reproduced or relied upon by third parties, except as agreed by AECOM or as required by law. AECOM accepts no responsibility, and denies any liability whatsoever, to any party that uses or relies on this drawing without AECOM's express written consent. Do not scale this document. All measurements must be obtained from the stated dimensions.

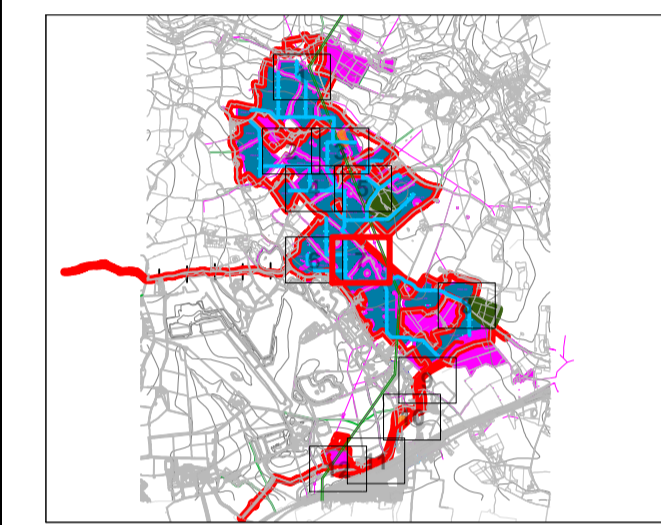




**GENERAL NOTES**

1. TREE CATEGORIES AS DEFINED BY BS 5837:2012
2. TREE LOCATIONS ARE BASED ON THE OS MAPPING, AERIAL IMAGERY, AND GPS CO-ORDINATES FROM ON SITE WALKOVER.
3. \* INDICATES A TREE / GROUP WHOSE POSITION IS APPROXIMATE AS BASED UPON AERIAL PHOTOGRAPHY AND ON SITE OBSERVATIONS.
4. PLANS SHOULD BE READ IN CONJUNCTION WITH THE AECOM ARCHAEOLOGICAL REPORT.
5. THE ORIGINAL OF THIS DRAWING WAS PRODUCED IN COLOUR - A MONOCHROME COPY SHOULD NOT BE RELIED UPON.
6. DRAWING REFERENCES:  
 010201.dwg - Longfield Solar Farm RB.dwg  
 407\_LGF\_DR\_PFE\_00018.dwg  
 N:\Longfield Solar Farm Mapping.dwg  
 Longfield Solar Farm - Detailed Drawings - 010202.dwg  
 OS\_1000Map\_060802\_060815\_V05\_MapsMap\_061200.dwg  
 CR\_1517006\_RB.dwg

**KEY PLAN**



**KEY**

- SITE BOUNDARY
- EXISTING TREE, GROUP, WOODLAND, OR HEDGE TO BE RETAINED
- EXISTING TREE, GROUP, WOODLAND, OR HEDGE TO BE REMOVED
- ROOT PROTECTION AREA OF RETAINED TREES (AS DEFINED BY BS 5837:2012)
- TREE PROTECTION FENCING
- CONSTRUCTION EXCLUSION ZONE (CONSTRUCTION OF PLANS, MATERIALS STORAGE, EXCAVATION AND ALL OTHER CONSTRUCTION ACTIVITIES ARE EXCLUDED WITHIN THESE AREAS FOR THE PURPOSES OF PROTECTING TREE HEALTH)
- CONSTRUCTION WORKING ZONE (MANAGED CONSTRUCTION PROCESSES PERMITTED IN ACCORDANCE WITH THE PRINCIPLES SET OUT WITHIN THE ARCHAEOLOGICAL IMPACT ASSESSMENT)
- GROUND PROTECTION ZONE (MANAGED CONSTRUCTION PROCESSES PERMITTED IN ACCORDANCE WITH THE PRINCIPLES SET OUT WITHIN THE ARCHAEOLOGICAL IMPACT ASSESSMENT)
- PROPOSED DEVELOPMENT LAYOUT (BASED UPON DRAWING REFERENCES LISTED IN THE GENERAL NOTES SECTION)
- VETERAN TREE MARKER (INDICATES POSITION OF A VETERAN TREE)
- ANCIENT WOODLAND (WITH 15M BUFFER ZONE) (AREA CLASSIFIED AS AN ANCIENT WOODLAND)
- TREE PRESERVATION ORDER (AREA COVERED BY A TREE PRESERVATION ORDER (TPO))
- 400 kV CABLE ROUTE (IN 6M WORKING WIDTH)
- OTHER CABLE ROUTES (IN 6M WORKING WIDTH)

**ISSUE/REVISION**

NO	DATE	DESCRIPTION
P01	22.09.22	FIRST ISSUE
VR		DATE DESCRIPTION

**DRAWING STATUS**

ISSUE

**PROJECT NUMBER**

60640215

**SHEET TITLE**

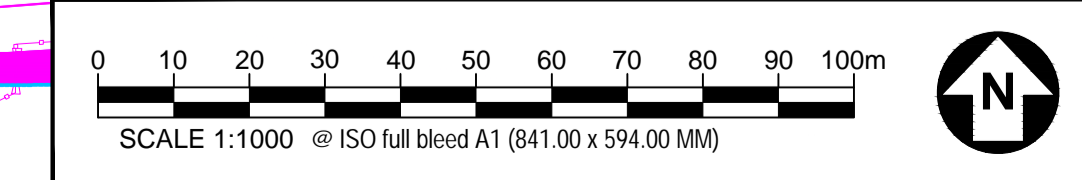
TREE PROTECTION PLAN (SHEET 7)

**SHEET NUMBER**

60640215-ACM-XX-XX-AB-TPP-07

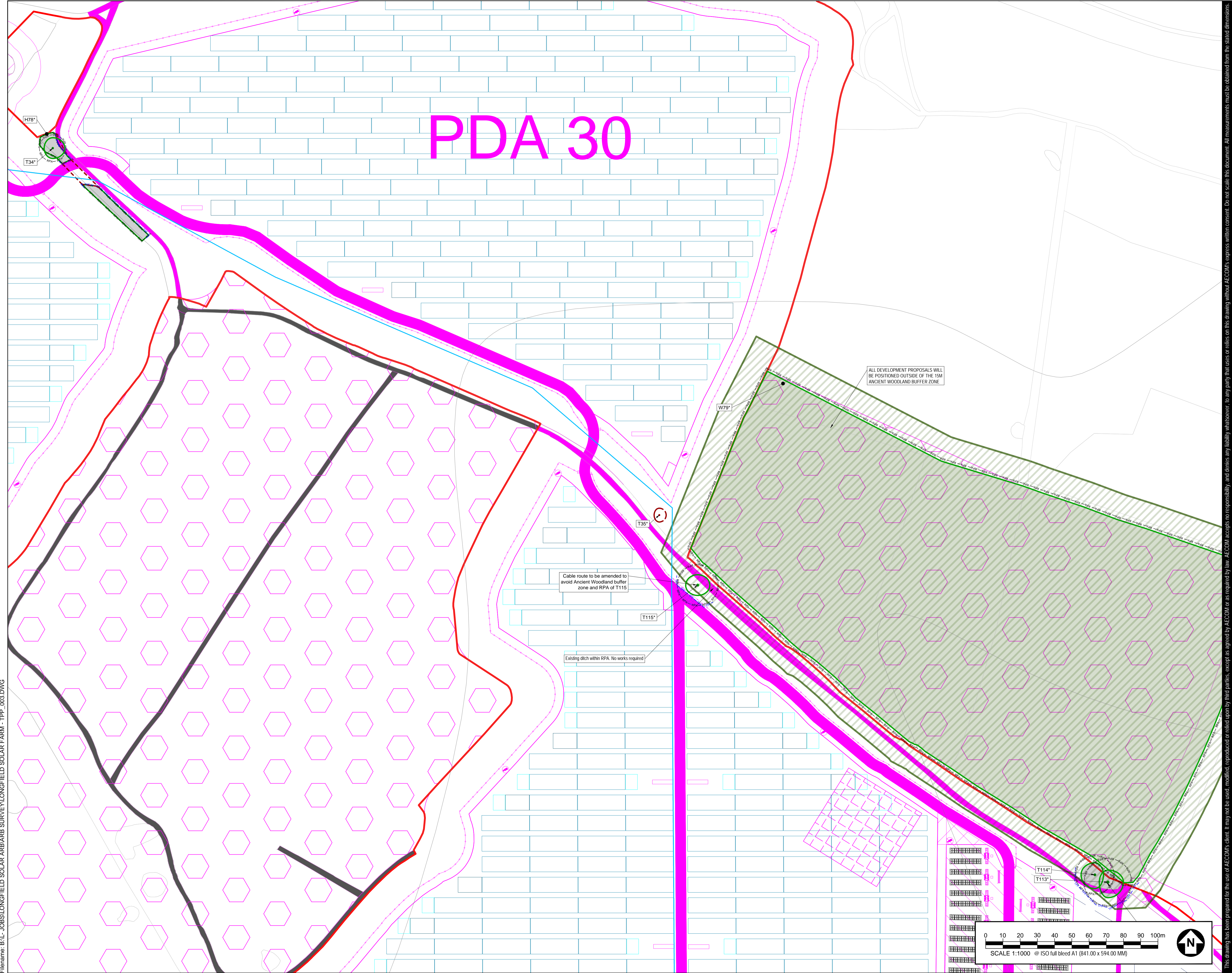
**REV.**

P01



This drawing has been prepared for the use of AECOM's client. It may not be used, modified, reproduced or relied upon by third parties, except as agreed by AECOM or as required by law. AECOM accepts no responsibility and denies any liability whatsoever to any party that uses or relies on this drawing without AECOM's express written consent. Do not scale this document. All measurements must be obtained from the stated dimensions.

# PDA 30



**PROJECT**  
LONGFIELD SOLAR

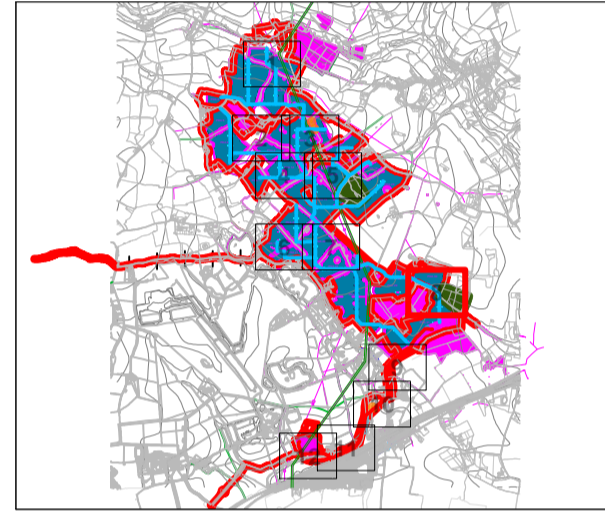
**CLIENT**  
LONGFIELD SOLAR  
ENERGY FARM LTD  
CONSULTANT

**AECOM**  
Plumer House, Third Floor,  
East Wing, Tallyour Road  
Plymouth, PL6 5DH  
Tel +44(0)1752 676700  
Fax +44(0)870 238 6023  
www.aecom.com

**GENERAL NOTES**

1. TREE CATEGORIES AS DEFINED BY BS 5837:2012
2. TREE LOCATIONS ARE BASED ON THE OS MAPPING, AERIAL IMAGERY, AND GPS CO-ORDINATES FROM ON SITE WALKOVER.
3. \* INDICATES A TREE / GROUP WHOSE POSITION IS APPROXIMATE AS BASED UPON AERIAL PHOTOGRAPHY AND ON SITE OBSERVATIONS.
4. PLANS SHOULD BE READ IN CONJUNCTION WITH THE AECOM ARBORICULTURAL REPORT.
5. THE ORIGINAL OF THIS DRAWING WAS PRODUCED IN COLOUR - A MONOCHROME COPY SHOULD NOT BE RELIED UPON.
6. DRAWING REFERENCES:  
20220101 - Longfield Solar Farm RB.B.dwg  
4077\_LGF\_DR\_PFE\_200108.dwg  
X\_Longfield Solar Farm Mapping.dwg  
Longfield Solar Farm - Detailed Drawings - 010222.dwg  
015\_SiteMap.dwg, 016000\_016015\_V5\_Map.dwg, 016100.dwg  
016120.dwg, 016130.dwg

**KEY PLAN**



- KEY**
- SITE BOUNDARY
  - EXISTING TREE, GROUP, WOODLAND, OR HEDGE TO BE RETAINED
  - EXISTING TREE, GROUP, WOODLAND, OR HEDGE TO BE REMOVED
  - ROOT PROTECTION AREA OF RETAINED TREES (AS DEFINED BY BS 5837:2012)
  - TREE PROTECTION FENCING
  - CONSTRUCTION EXCLUSION ZONE (PROTECTION OF PLANS, MATERIALS STORAGE, EXCAVATION AND ALL OTHER CONSTRUCTION ACTIVITIES ARE EXCLUDED WITHIN THESE AREAS FOR THE DURATION OF PROTECTIVE TREE WORK)
  - CONSTRUCTION WORKING ZONE (MANAGED CONSTRUCTION PROCESSES PERMITTED IN ACCORDANCE WITH THE PRINCIPLES SET OUT WITHIN THE ARBORICULTURAL IMPACT ASSESSMENT)
  - GROUND PROTECTION ZONE (MANAGED CONSTRUCTION PROCESSES PERMITTED IN ACCORDANCE WITH THE PRINCIPLES SET OUT WITHIN THE ARBORICULTURAL IMPACT ASSESSMENT)
  - PROPOSED DEVELOPMENT LAYOUT (BASED UPON DRAWING REFERENCES LISTED IN THE GENERAL NOTES SECTION)
  - ★ VETERAN TREE MARKER (INDICATES POSITION OF A VETERAN TREE)
  - ANCIENT WOODLAND (WITH 15M BUFFER ZONE) (AREA CLASSIFIED AS AN ANCIENT WOODLAND)
  - TREE PRESERVATION ORDER (AREA COVERED BY A TREE PRESERVATION ORDER (TPO))
  - 400 kV CABLE ROUTE (IN 5M WORKING WIDTH)
  - OTHER CABLE ROUTES (IN 5M WORKING WIDTH)

**ISSUE/REVISION**

NO	DATE	DESCRIPTION
P01	22.09.22	FIRST ISSUE
VR		

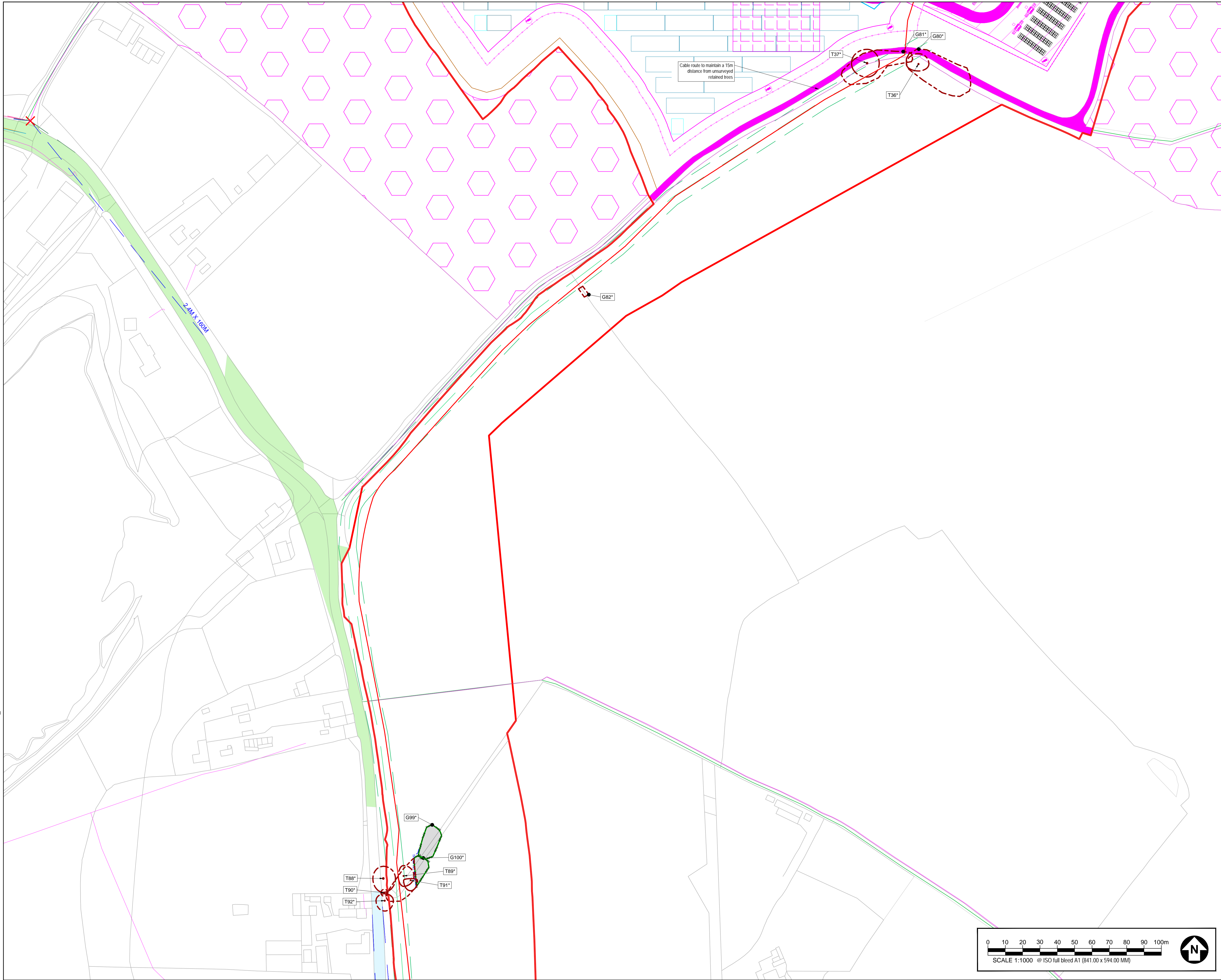
**DRAWING STATUS**  
ISSUE

**PROJECT NUMBER**  
60640215

**SHEET TITLE**  
TREE PROTECTION PLAN  
(SHEET 8)

**SHEET NUMBER**      **REV.**  
60640215-ACM-XX-XX-AB-TPP-08      P01

This drawing has been prepared for the use of AECOM's client. It may not be used, modified, reproduced or relied upon by third parties, except as agreed by AECOM or as required by law. AECOM accepts no responsibility and denies any liability whatsoever to any party that uses or relies on this drawing without AECOM's express written consent. Do not scale this document. All measurements must be obtained from the scaled dimensions.

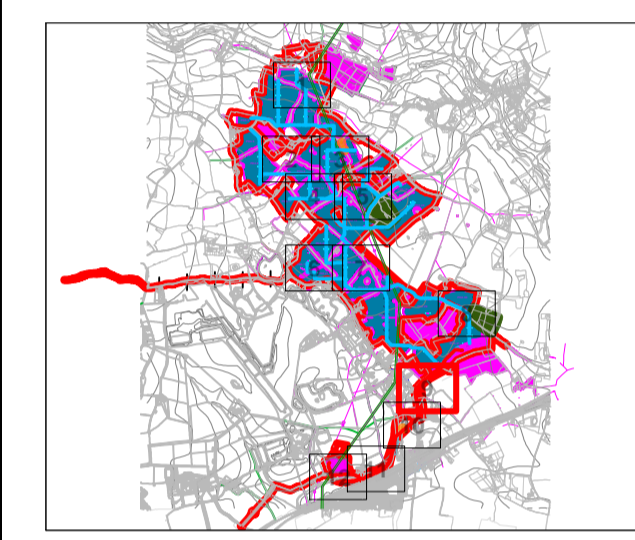


Cable route to maintain a 15m distance from unsurveyed retained trees

**GENERAL NOTES**

1. TREE CATEGORIES AS DEFINED BY BS 5837:2012
2. TREE LOCATIONS ARE BASED ON THE OS MAPPING, AERIAL IMAGERY, AND GPS CO-ORDINATES FROM ON SITE WALKOVER.
3. \* INDICATES A TREE / GROUP WHOSE POSITION IS APPROXIMATE AS BASED UPON AERIAL PHOTOGRAPHY AND ON SITE OBSERVATIONS.
4. PLANS SHOULD BE READ IN CONJUNCTION WITH THE AECOM ARBORICULTURAL REPORT.
5. THE ORIGINAL OF THIS DRAWING WAS PRODUCED IN COLOUR - A MONOCHROME COPY SHOULD NOT BE RELIED UPON.
6. DRAWING REFERENCES:  
 010221.dwg - Longfield Solar Farm RB.dwg  
 407\_LGF\_DR\_PPE\_000108.dwg  
 T.L. Longfield Solar Farm Mapping.dwg  
 Longfield Solar Farm - Detailed Drawings - 010222.dwg  
 105\_SiteMap.dwg, 106001\_050115\_05\_Mapping\_081220.dwg  
 01\_1017006\_Site RB.dwg

**KEY PLAN**



**KEY**

- SITE BOUNDARY
- EXISTING TREE, GROUP, WOODLAND, OR HEDGE TO BE RETAINED
- EXISTING TREE, GROUP, WOODLAND, OR HEDGE TO BE REMOVED
- ROOT PROTECTION AREA OF RETAINED TREES (AS DEFINED BY BS 5837:2012)
- TPF — TREE PROTECTION FENCING
- CONSTRUCTION EXCLUSION ZONE (STORAGE OF PLANT MATERIALS, STORAGE, EXCAVATION AND ALL OTHER CONSTRUCTION ACTIVITIES ARE EXCLUDED WITHIN THESE AREAS FOR THE PURPOSES OF PROTECTING TREE HEALTH)
- CONSTRUCTION WORKING ZONE (MANAGED CONSTRUCTION PROCESSES PERMITTED IN ACCORDANCE WITH THE PRINCIPLES SET OUT WITHIN THE ARBORICULTURAL IMPACT ASSESSMENT)
- GROUND PROTECTION ZONE (MANAGED CONSTRUCTION PROCESSES PERMITTED IN ACCORDANCE WITH THE PRINCIPLES SET OUT WITHIN THE ARBORICULTURAL IMPACT ASSESSMENT)
- PROPOSED DEVELOPMENT LAYOUT (BASED UPON DRAWING REFERENCES LISTED IN THE GENERAL NOTES SECTION)
- ★ VETERAN TREE MARKER (INDICATES POSITION OF A VETERAN TREE)
- ANCIENT WOODLAND (WITH 15M BUFFER ZONE) (AREA CLASSIFIED AS AN ANCIENT WOODLAND)
- TREE PRESERVATION ORDER (AREA COVERED BY A TREE PRESERVATION ORDER (TPO))
- 400 kV CABLE ROUTE (W/ 5M WORKING WIDTH)
- OTHER CABLE ROUTES (W/ 5M WORKING WIDTH)

**ISSUE/REVISION**

NO	DATE	DESCRIPTION
P01	22.09.22	FIRST ISSUE
NR		

**DRAWING STATUS**  
 ISSUE

**PROJECT NUMBER**  
 60640215

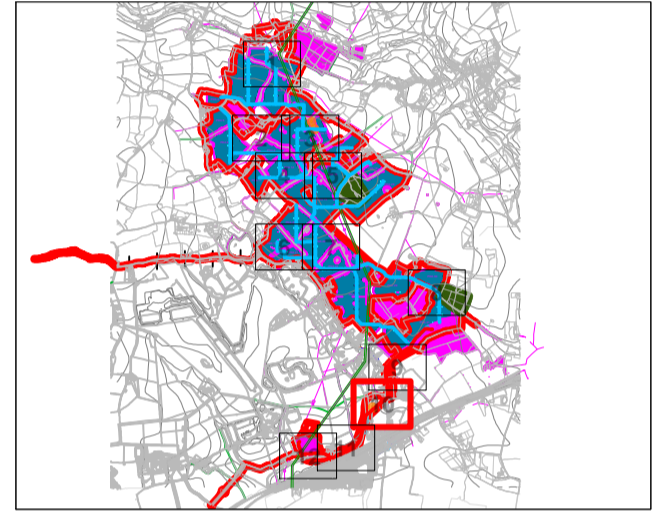
**SHEET TITLE**  
 TREE PROTECTION PLAN (SHEET 9)

This drawing has been prepared for the use of AECOM's client. It may not be used, modified, reproduced or relied upon by third parties, except as agreed by AECOM or as required by law. AECOM accepts no responsibility and denies any liability whatsoever to any party that uses or relies on this drawing without AECOM's express written consent. Do not scale this document. All measurements must be obtained from the stated dimensions.

**GENERAL NOTES**

1. TREE CATEGORIES AS DEFINED BY BS 5837:2012
2. TREE LOCATIONS ARE BASED ON THE OS MAPPING, AERIAL IMAGERY, AND GPS CO-ORDINATES FROM ON SITE WALKOVER.
3. \* INDICATES A TREE / GROUP WHOSE POSITION IS APPROXIMATE AS BASED UPON AERIAL PHOTOGRAPHY AND ON SITE OBSERVATIONS.
4. PLANS SHOULD BE READ IN CONJUNCTION WITH THE AECOM ARBORICULTURAL REPORT.
5. THE ORIGINAL OF THIS DRAWING WAS PRODUCED IN COLOUR - A MONOCHROME COPY SHOULD NOT BE RELIED UPON.
6. DRAWING REFERENCES:  
 2022.01.05 - Longfield Solar Farm RB.B.dwg  
 4077\_LGF\_DR\_PFE\_000108.dwg  
 X:\Longfield Solar plan mapping.dwg  
 Longfield Solar Farm - Detailed Drawings - 010222.dwg  
 OS\_SiteMap\_163803\_164015\_V5\_Mapping\_061220.dwg  
 OS\_15747006\_1618\_P06.dwg

**KEY PLAN**



**KEY**

- SITE BOUNDARY
- EXISTING TREE, GROUP, WOODLAND, OR HEDGE TO BE RETAINED
- EXISTING TREE, GROUP, WOODLAND, OR HEDGE TO BE REMOVED
- ROOT PROTECTION AREA OF RETAINED TREES (AS DEFINED BY BS 5837:2012)
- TREE PROTECTION FENCING
- CONSTRUCTION EXCLUSION ZONE (PROTECTION OF PLANS, MATERIALS, STORAGE, EXCAVATION AND ALL OTHER CONSTRUCTION ACTIVITIES ARE EXCLUDED WITHIN THESE AREAS FOR THE PURPOSES OF PROTECTING TREE HEALTH)
- CONSTRUCTION WORKING ZONE (MANAGED CONSTRUCTION PROCESSES PERMITTED IN ACCORDANCE WITH THE PRINCIPLES SET OUT WITHIN THE ARBORICULTURAL IMPACT ASSESSMENT)
- GROUND PROTECTION ZONE (MANAGED CONSTRUCTION PROCESSES PERMITTED IN ACCORDANCE WITH THE PRINCIPLES SET OUT WITHIN THE ARBORICULTURAL IMPACT ASSESSMENT)
- PROPOSED DEVELOPMENT LAYOUT (BASED UPON DRAWING REFERENCES LISTED IN THE GENERAL NOTES SECTION)
- VETERAN TREE MARKER (INDICATES POSITION OF A VETERAN TREE)
- ANCIENT WOODLAND (WITH 15M BUFFER ZONE) (AREA CLASSIFIED AS AN ANCIENT WOODLAND)
- TREE PRESERVATION ORDER (AREA COVERED BY A TREE PRESERVATION ORDER (TPO))
- 400 kV CABLE ROUTE (W/ 5M WORKING WIDTH)
- OTHER CABLE ROUTES (W/ 3M WORKING WIDTH)

**ISSUE/REVISION**

NO	DATE	DESCRIPTION
P01	22.09.22	FIRST ISSUE
VR		

**DRAWING STATUS**

ISSUE

**PROJECT NUMBER**

60640215

**SHEET TITLE**

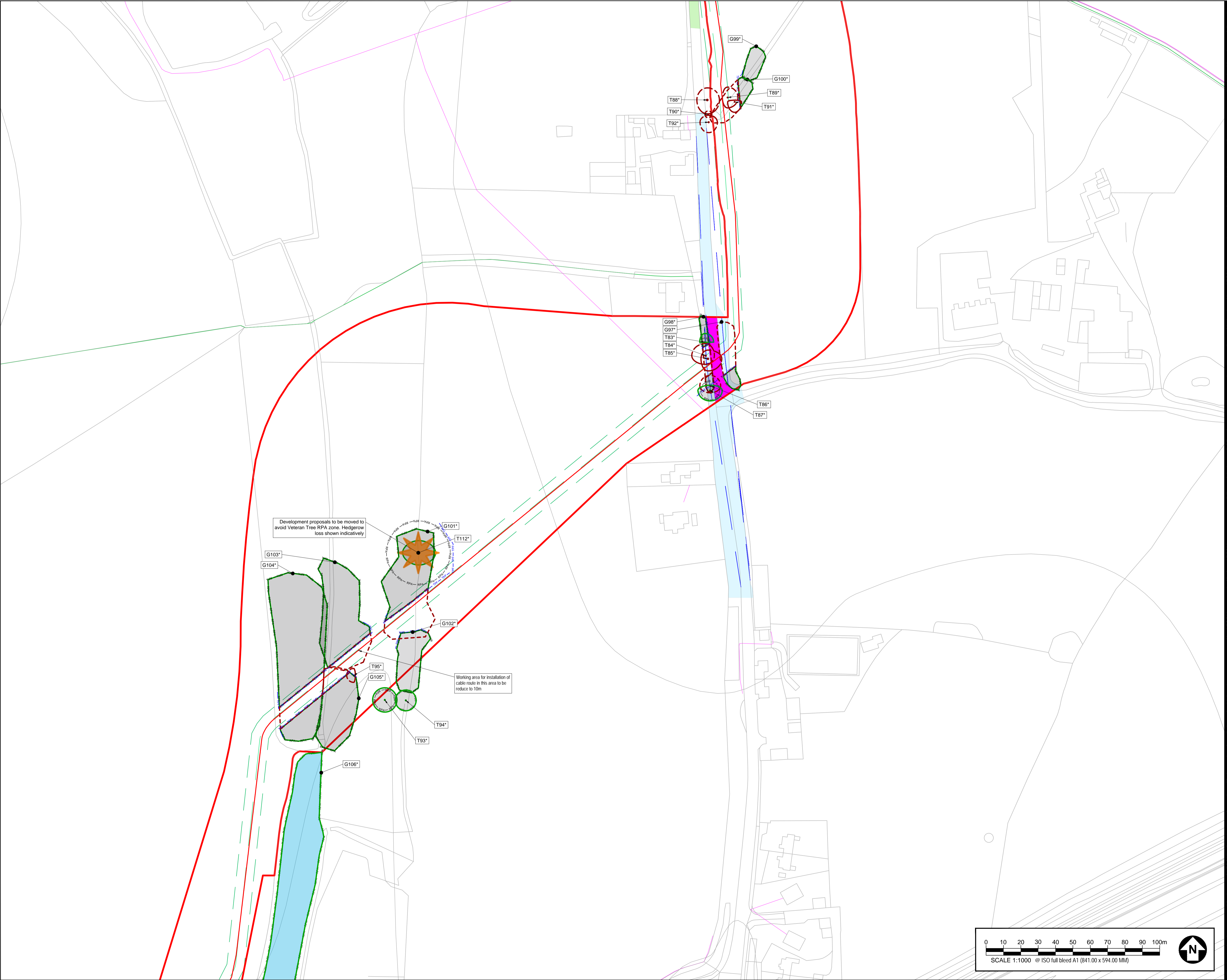
TREE PROTECTION PLAN  
 (SHEET 10)

**SHEET NUMBER**

60640215-ACM-XX-XX-AB-TPP-010

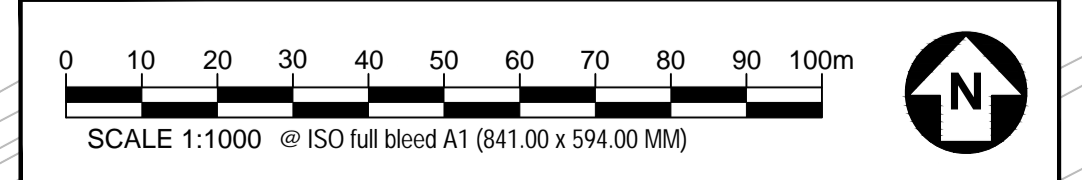
**REV.**

P01

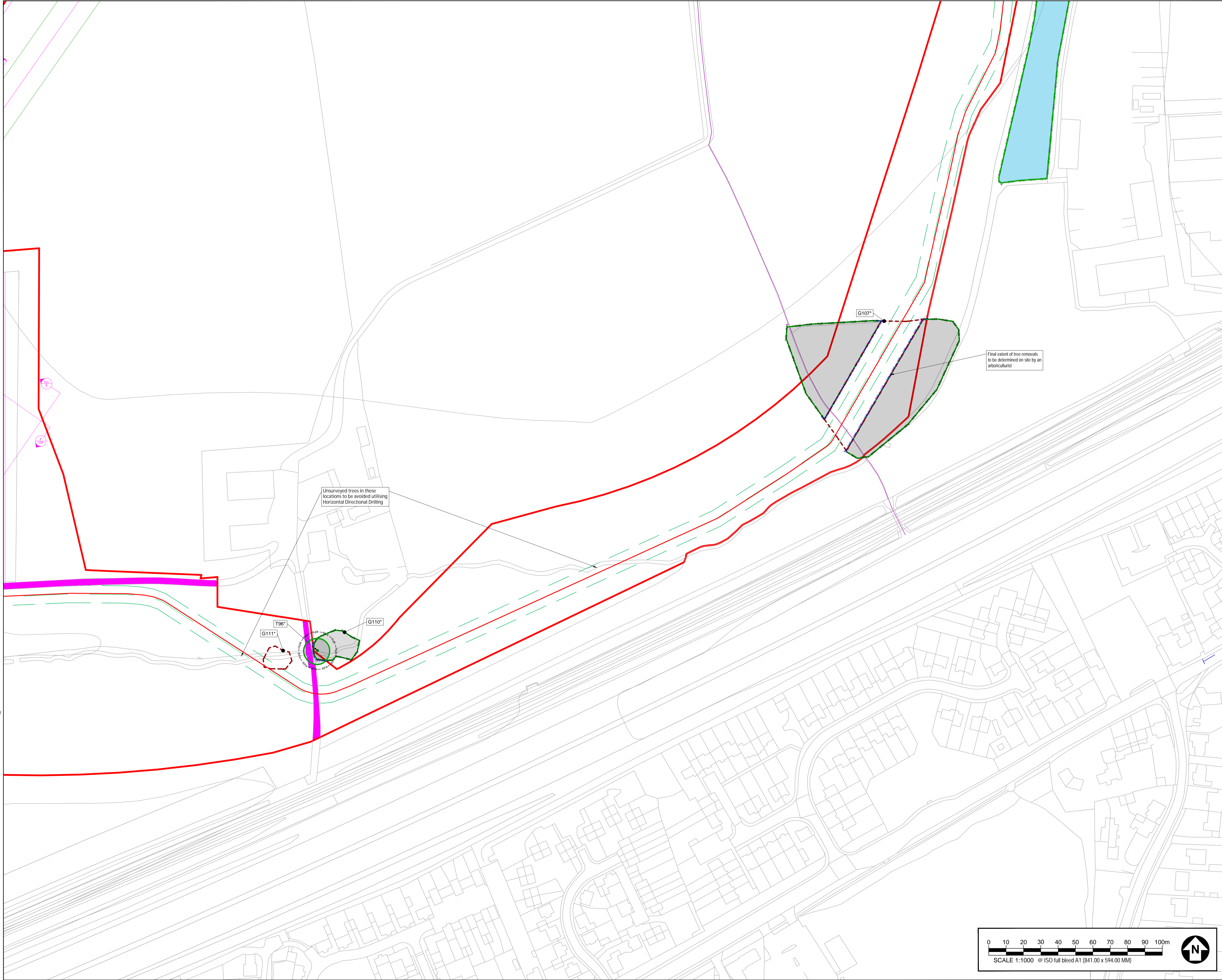


Development proposals to be moved to avoid Veteran Tree RPA zone. Hedgerow loss shown indicatively

Working area for installation of cable route in this area to be reduce to 10m



This drawing has been prepared for the use of AECOM's client. It may not be used, modified, reproduced or relied upon by third parties, except as agreed by AECOM or as required by law. AECOM accepts no responsibility and denies any liability whatsoever to any party that uses or relies on this drawing without AECOM's express written consent. Do not scale this document. All measurements must be obtained from the stated dimensions.



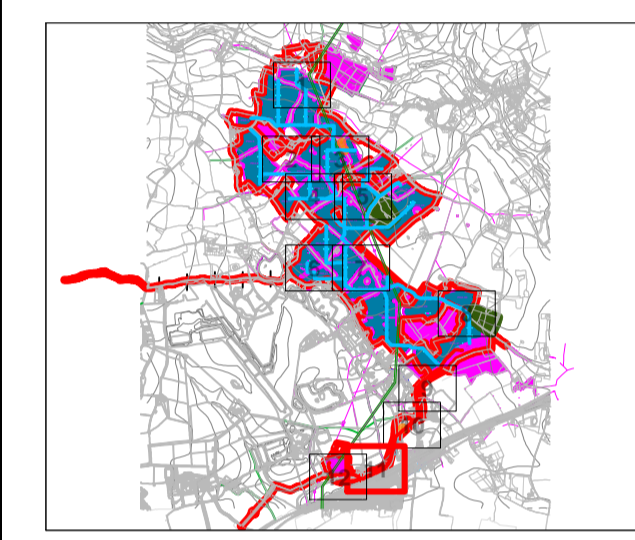
Unsurveyed trees in these locations to be avoided utilising Horizontal Directional Drilling

Final extent of tree removals to be determined on site by an arboriculturist

**GENERAL NOTES**

1. TREE CATEGORIES AS DEFINED BY BS 5837:2012
2. TREE LOCATIONS ARE BASED ON THE OS MAPPING, AERIAL IMAGERY, AND GPS CO-ORDINATES FROM ON SITE WALKOVER.
3. \* INDICATES A TREE / GROUP WHOSE POSITION IS APPROXIMATE AS BASED UPON AERIAL PHOTOGRAPHY AND ON SITE OBSERVATIONS.
4. PLANS SHOULD BE READ IN CONJUNCTION WITH THE AECOM ARBORICULTURAL REPORT.
5. THE ORIGINAL OF THIS DRAWING WAS PRODUCED IN COLOUR - A MONOCHROME COPY SHOULD NOT BE RELIED UPON.
6. DRAWING REFERENCES:  
20220105\_Longfield Solar Farm RB.dwg  
407\_LGF\_DR\_PFE\_200108.dwg  
\*\_Longfield Solar Farm Mapping.dwg  
Longfield Solar Farm - Detailed Drawings - 010222.dwg  
OS\_SiteMapping\_202203\_050315\_05\_Mapping\_081220.dwg  
01\_12122002\_RB RB.dwg

**KEY PLAN**



**KEY**

- SITE BOUNDARY
- EXISTING TREE, GROUP, WOODLAND, OR HEDGE TO BE RETAINED
- EXISTING TREE, GROUP, WOODLAND, OR HEDGE TO BE REMOVED
- ROOT PROTECTION AREA OF RETAINED TREES (AS DEFINED BY BS 5837:2012)
- TREE PROTECTION FENCING
- CONSTRUCTION EXCLUSION ZONE (STORAGE OF PLANT MATERIALS, STORAGE, EXCAVATION AND ALL OTHER CONSTRUCTION ACTIVITIES ARE EXCLUDED WITHIN THESE AREAS FOR THE PURPOSES OF PROTECTING TREE HEALTH)
- CONSTRUCTION WORKING ZONE (MANAGED CONSTRUCTION PROCESSES PERMITTED IN ACCORDANCE WITH THE PRINCIPLES SET OUT WITHIN THE ARBORICULTURAL IMPACT ASSESSMENT)
- GROUND PROTECTION ZONE (MANAGED CONSTRUCTION PROCESSES PERMITTED IN ACCORDANCE WITH THE PRINCIPLES SET OUT WITHIN THE ARBORICULTURAL IMPACT ASSESSMENT)
- PROPOSED DEVELOPMENT LAYOUT (BASED UPON DRAWINGS AND NOTES LISTED IN THE GENERAL NOTES SECTION)
- VETERAN TREE MARKER (INDICATES POSITION OF A VETERAN TREE)
- ANCIENT WOODLAND (WITH 15M BUFFER ZONE) (AREA CLASSIFIED AS AN ANCIENT WOODLAND)
- TREE PRESERVATION ORDER (AREA COVERED BY A TREE PRESERVATION ORDER (TPO))
- 400 kV CABLE ROUTE (IN 5M WORKING WIDTH)
- OTHER CABLE ROUTES (IN 5M WORKING WIDTH)

**ISSUE/REVISION**

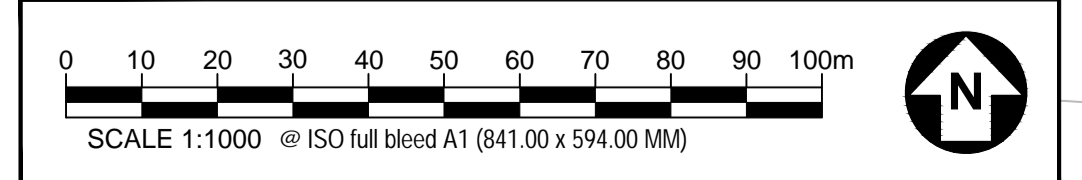
NO	DATE	DESCRIPTION
P01	22.09.22	FIRST ISSUE
VR		DATE DESCRIPTION

**DRAWING STATUS**  
ISSUE

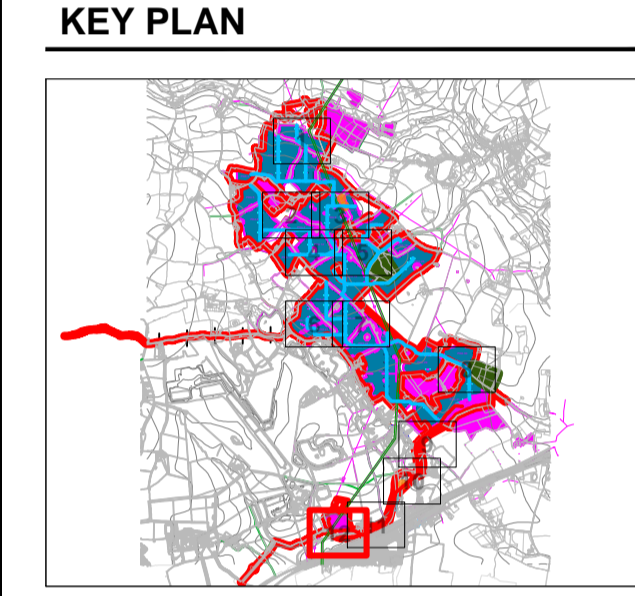
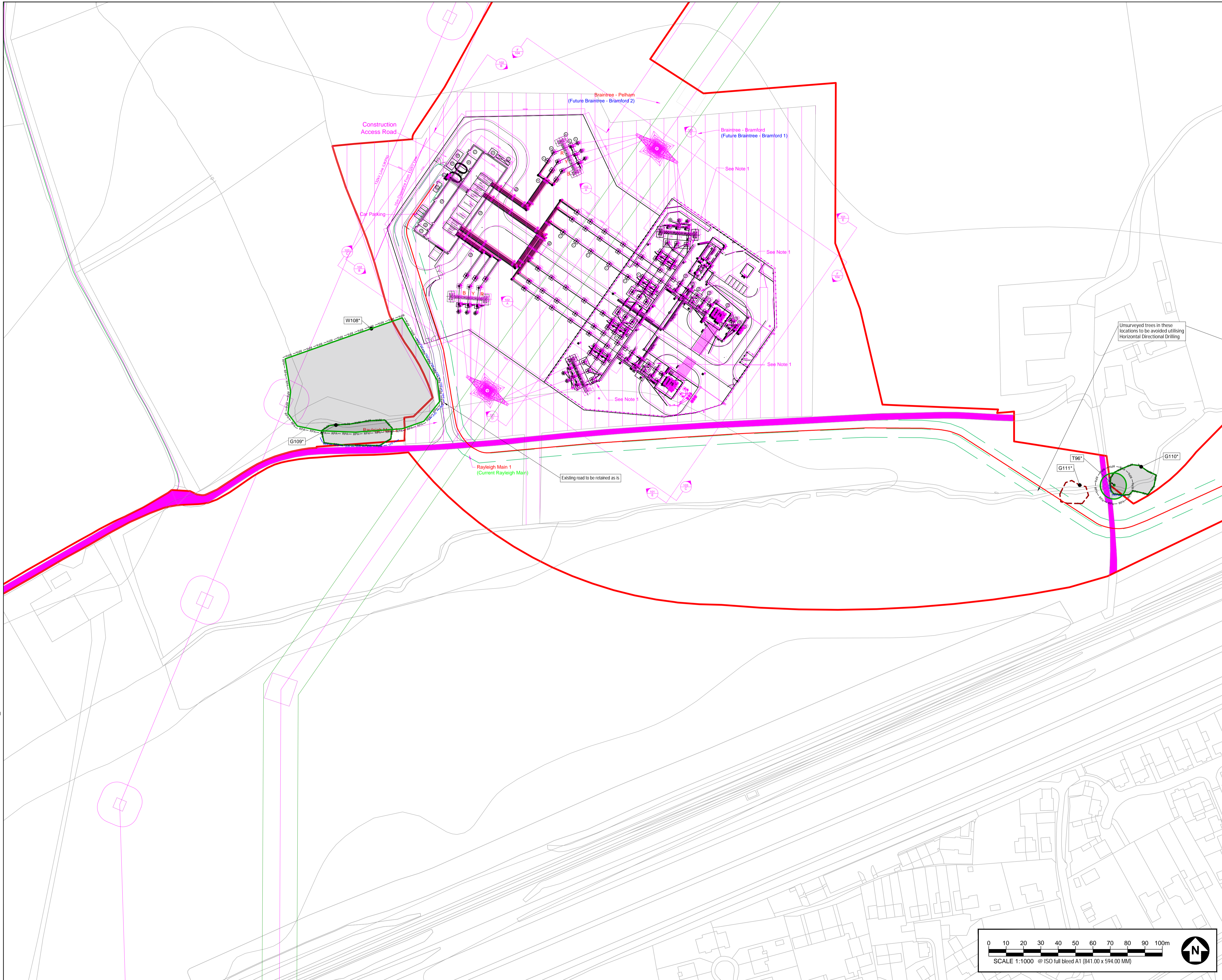
**PROJECT NUMBER**  
60640215

**SHEET TITLE**  
TREE PROTECTION PLAN (SHEET 11)

**SHEET NUMBER** 60640215-ACM-XX-XX-AB-TPP-011 **REV.** P01



This drawing has been prepared for the use of AECOM's client. It may not be used, modified, reproduced or relied upon by third parties, except as agreed by AECOM or as required by law. AECOM accepts no responsibility and denies any liability whatsoever to any party that uses or relies on this drawing without AECOM's express written consent. Do not scale this document. All measurements must be obtained from the stated dimensions.



**KEY**

- SITE BOUNDARY
- EXISTING TREE, GROUP, WOODLAND, OR HEDGE TO BE RETAINED
- EXISTING TREE, GROUP, WOODLAND, OR HEDGE TO BE REMOVED
- ROOT PROTECTION AREA OF RETAINED TREES (AS DEFINED BY BS 5837:2012)
- TREE PROTECTION FENCING
- CONSTRUCTION EXCLUSION ZONE (STORAGE OF PLANT MATERIALS, STORAGE, EXCAVATION AND ALL OTHER CONSTRUCTION ACTIVITIES ARE EXCLUDED WITHIN THESE AREAS FOR THE DURATION OF PROTECTING TREE HEALTH)
- CONSTRUCTION WORKING ZONE (MANAGED CONSTRUCTION PROCESSES PERMITTED IN ACCORDANCE WITH THE PRINCIPLES SET OUT WITHIN THE ARBORCULTURAL IMPACT ASSESSMENT)
- GROUND PROTECTION ZONE (MANAGED CONSTRUCTION PROCESSES PERMITTED IN ACCORDANCE WITH THE PRINCIPLES SET OUT WITHIN THE ARBORCULTURAL IMPACT ASSESSMENT)
- PROPOSED DEVELOPMENT LAYOUT (BASED UPON DRAWING AND NOTES LISTED IN THE GENERAL NOTES SECTION)
- VETERAN TREE MARKER (INDICATES POSITION OF A VETERAN TREE)
- ANCIENT WOODLAND (WITH 15M BUFFER ZONE) (AREA CLASSIFIED AS AN ANCIENT WOODLAND)
- TREE PRESERVATION ORDER (AREA COVERED BY A TREE PRESERVATION ORDER (TPO))
- 400 kV CABLE ROUTE (IN 5M WORKING WIDTH)
- OTHER CABLE ROUTES (IN 5M WORKING WIDTH)

**ISSUE/REVISION**

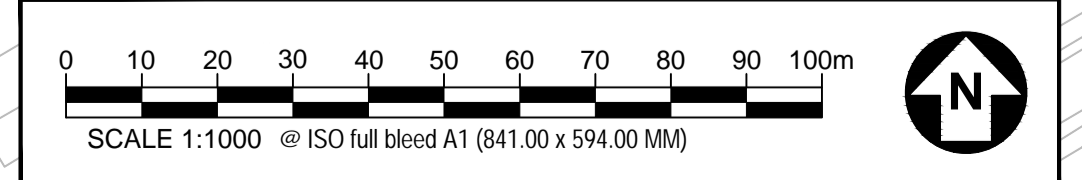
NO	DATE	DESCRIPTION
P01	22.09.22	FIRST ISSUE
VR		

**DRAWING STATUS**  
 ISSUE

**PROJECT NUMBER**  
 60640215

**SHEET TITLE**  
 TREE PROTECTION PLAN (SHEET 12)

**SHEET NUMBER**      **REV.**  
 60640215-ACM-XX-XX-AB-TPP-012      P01



This drawing has been prepared for the use of AECOM's client. It may not be used, modified, reproduced or relied upon by third parties, except as agreed by AECOM or as required by law. AECOM accepts no responsibility and denies any liability whatsoever to any party that uses or relies on this drawing without AECOM's express written consent. Do not scale this document. All measurements must be obtained from the stated dimensions.

# Appendix F Outline Tree Protection Measures

## F.1 Outline Tree Protection Measures

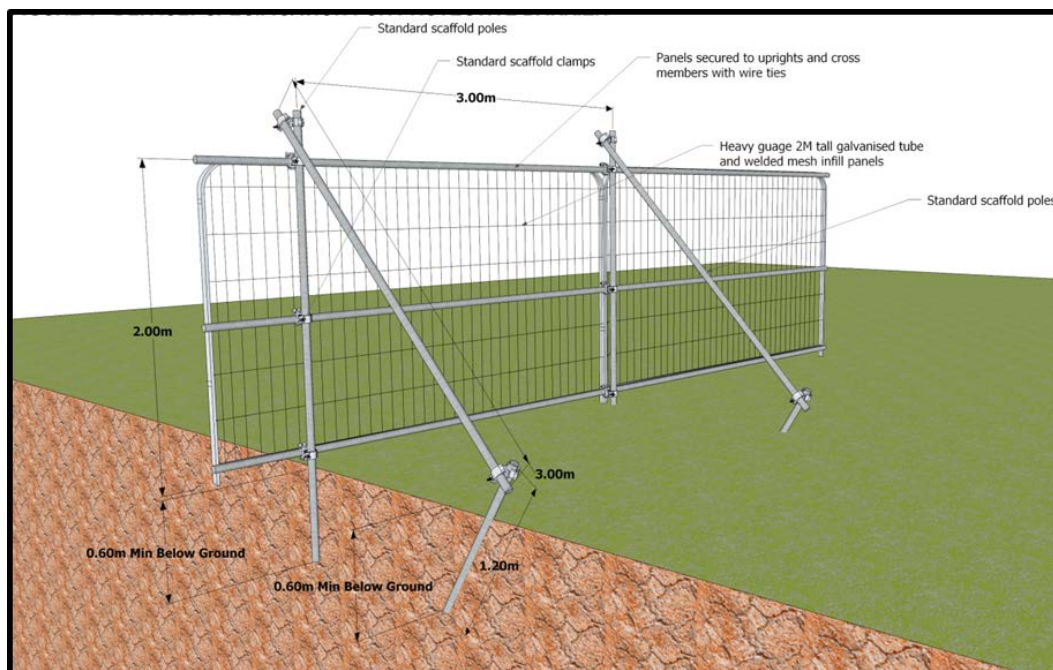
The default position as set out by BS 5837:2012 is that retained trees must be protected from construction operations with the erection of robust protective fencing positioned on the outer edge of the RPA or crown spread (whichever is greatest). All site operations will be restricted to the area outside of tree protection fencing and this area will form a Construction Exclusion Zone (CEZ) unless agreed otherwise. Protection measures will be installed as set out in the Tree Protection Plan included as Appendix E of this report.

The area inside the fence and any additional tree protection measures will be sacrosanct and must not be removed or altered without the prior approval of the LPA Tree Officer. Any damage to tree protection measures must be reported immediately.

Fencing shall be constructed with robust vertical and horizontal scaffold framework with weldmesh panels firmly attached as per BS 5837:2012 Figure 2 (included below). Vertical support poles and bracing poles must be located with care to avoid underground utility services and will be sited to avoid the structural roots of retained trees.

Alternative equivalent robust and immovable fencing specification including site hoarding will also be appropriate.

Suitable all weather signage will be fixed to fencing to notify site staff and visitors of the construction exclusion zone and its purpose (example included as Appendix G).



## Figure 14 - Default specification for protective barrier

When entering and exiting the site the fencing contractor must avoid the production of ruts on the unprotected surface of the ground.

Protective fencing and ground protection shall stay in place until all development operations have been completed and the prior consent of the LPA Tree Officer and/or an arboriculturist has been obtained.

## F.2 Ground Protection

Should access be unavoidable within the RPA of a retained tree, fit for purpose ground protection must be in place which is sufficient to protect the structure of the soil from damage based on the heaviest anticipated load.

As set out in section 6.2.3.3 of BS5837:2012 the following ground protection measures will be appropriate:

- Suitable ground protection for pedestrian only access will comprise a single thickness of scaffold boards set on a compressible layer of 100mm of woodchip on a geotextile separation layer.
- Pedestrian operated plant up to two tonnes in weight would require the use of a proprietary ground protection system (such as Ground Guards or Eve Trakway or equivalent) set on a minimum depth of 150mm woodchip or sharp sand.
- Heavier loads will require ground protection to an engineering specification in conjunction with arboricultural advice.

As a guide the threshold beyond which root development is significantly affected is a bulk density ranging from 1.4g per cm<sup>3</sup> for clay soils, to 1.75g per cm<sup>3</sup> for sandy soils.

Tree protective measures shall stay in place until all construction operations are completed and removal is agreed with the Site arboriculturist and/or the Local Authority Tree Officer as appropriate.

## F.3 General guidance for the management of exposed roots

7.1.1 Excavation must only take place within the RPA of a retained tree with the prior agreement of an arboriculturist and the Local Authority Tree Officer. All excavation must be undertaken using hand tools or compressed air (such as an air spade).

The following general principles will apply:

- Individual or small groups of roots less than 25mm in diameter will be retained where possible but can be severed with a sharp tool such as secateurs or pruning saws to leave a clean cut end (ideally 100mm back from the face of the excavation to account for future regrowth) where they pose an obstruction.



- Where roots are encountered which are larger than 25mm in diameter or where significant groups of smaller roots are found, the advice of an arboriculturist must be sought to decide an appropriate course of action (following consultation with the Local Authority Tree Officer where appropriate).
- Roots must only be exposed for the minimum period possible. In the interim period any exposed roots must be completely covered with dampened hessian sacking (which may require ongoing re wetting) to avoid drying out and exposure to light (which can result in the death of roots). Backfill for excavations should utilise the parent material and must not be significantly compacted.

## F.4 Storage, use and mixing of materials

The use, mixing and washing of materials can lead to run off or inadvertent spillage into tree root zones. Many substances often used on construction sites can be toxic to tree roots (such as concrete, fuels, salts, builders sand and herbicides), can result in the death of tree roots and beneficial soil organisms; and have a significant impact on the future health and appearance of trees.

The storage of materials can result in an effective raised soil level. This buries tree roots at depths where air and water are less available and can lead to the decline or death of the tree.

For these reasons the storage of materials and any washing, mixing or refuelling must take place in agreed allocated areas at least 10m from the edge of the RPA of retained trees.

Any slope effect must be taken into account and where there is a potential for run off, heavy duty polythene sheeting and sandbags must be in place as bunding to prevent toxic materials reaching RPAs.

## Appendix G Tree Protection Signage (Example)

